

AMERICAN INSTITUTE OF PROFESSIONAL GEOLOGISTS

Northeast Section **NEWSLETTER** **WINTER 2025**

As published on 2/18/25

**NE-AIPG Webinar - *Approved for 1 PDH!*
February 20, 6-7 PM. "Exposure Dating In
Sub-Ice Material, Greenland" by Allie Balter-
Kennedy, Lamont Cosmo Lab. [Page 16](#)**

**LSRPA's 2025 NJSRC Conference
March 26-27, 2025 [Page 40](#)**

****Discount Code : NE-AIPG-2025NJSRC****

**Give a Little or a Lot
to the Profession That
Has Given You So
Much! DO
SOMETHING,
RIGHT NOW
ONLINE by going to
the Scholarship Fund
on [Pages 80-81](#)**



**NE-AIPG Spring Mtg
w/HMPGA's 7th
Student Poster Expo,
Field Trip - 4/16/25
[Page 21](#)**

**Report on 2024
NYSCPG's Geology
Days [Page 18](#)**

<https://ne-aipg.org>

EXCELLENCE ON EVERY LEVEL™

CASCADe provides a full range of environmental and geotechnical drilling, site investigation and characterization, and environmental remediation technologies. Our vision is to integrate technology, safety, sustainability and human potential to tackle the challenging environmental and geotechnical issues facing our clients.

YOUR PARTNER FROM CONCEPT TO CLEAN UP

DRILLING

environmental, geotechnical, utility
clearance, IDW, sonic, auger, rotary, direct
push

SITE CHARACTERIZATION

high resolution site characterization,
sampling, data visualization, MHPT, UVOST,
CORE™™™, WATERLOO™™™, OIP™™

REMEDIATION

in situ, ex situ, collaborative design,
thermal, chemical, biological,
emplacement

CONTACT

ADT

Environmental &
Geotechnical Drilling
Bill Poupis
516-616-6026 EXT 105
wpoupis@aquiferdrilling.com

CASCADe

Strategic Account Manager
Jay Boland
M: 413-329-7525
jboland@cascade-env.com

VISIT US TODAY AT WWW.CASCADe-ENV.COM TO LEARN MORE

With Cascade offices across the United States, subsidiaries and international partners, we deliver reliable services **nationwide.**

DRILEX

ENVIRONMENTAL



Drilex Environmental is one of New England's premier drilling companies

Drilex Environmental was established in 1995 and is one of New England's fastest growing, premier, full service Drilling and Environmental Construction companies. We are a quality drilling company, able to meet the ever changing needs of our clients.

www.drilexenv.com



Hartwell Business Park • 127 Hartwell Street • West Boylston, MA
508-835-6724 • Fax: 508-835-6734

AIPG NORTHEAST SECTION NEWSLETTER

WINTER 2025 EDITION No. 179

**PUBLISHED BY THE NORTHEAST SECTION OF THE AMERICAN
INSTITUTE OF PROFESSIONAL GEOLOGISTS**

TABLE OF CONTENTS:

2025 NE-AIPG Executive Committee Directory	<u>5</u>
2025 Executive Committee Meeting Schedule	<u>7</u>
2025 Index of Advertisers	<u>8-9</u>
Presidential Ramblings	<u>11</u>
Webinar: Exposure dating in sub-ice material from Greenland	<u>16</u>
2024 NYSCPG Geology Days Conference Report	<u>18</u>
Angelo Tagliacozzo Scholarship 2024-2025	<u>20</u>
NE-AIPG Spring Meeting with HMPGA's 7th Annual Student Poster Exposition and Professional/Career Networking Event April 16, 2025 ..	<u>21</u>
Call to Action for the Geologic Community	<u>22</u>
The Slayback Award	<u>25</u>
NYSCPG News	<u>26</u>
Over the Edge: Repel for a Cuyre	<u>30</u>
Geology Rocks! 2025: May 8, 2025	<u>31</u>
AIPG's Mentoring Program	<u>35</u>
AIPG's Career Center	<u>35</u>
LSRPA's 2025 NJSRC	<u>40</u>
Connecting the Space: Red Rock Canyon to Joshua Tree National Park ...	<u>44</u>
NE-AIPG ExCom Meeting Minutes	<u>50</u>
AIPG Mission	<u>65</u>
Piggybacking: Service Expanded for NE/AIPG Advertisers!	<u>68</u>
NE-AIPG 2025 Publication Schedule	<u>72</u>
ATMG Scholarship List of Contributors	<u>78-79</u>
ATMG Scholarship Overview	<u>80</u>
Angelo Tagliacozzo Scholarship Perpetual Trust Fund Contribution Form	

Please Contribute Now! 81

NEWSLETTER EDITOR

*Kim Burger
Roux Environmental Engineering
and Geology, D.P.C.
209 Shafter Street
Islandia, NY 11749
631-780-2956 (Cell)
kburger@rouxinc.com*



PUBLISHER & ADVERTISING MANAGER

*Dick Young
Consulting Geologists, LLC
179 Intervale Road
Parsippany, NJ 07054
973-335-2289 (Office)
973-335-9799 (Fax)
ryoungnj@aol.com*

The Newsletter of the Northeast Section of the American Institute of Professional Geologists is digitally published four times annually at https://ne-aipg.org/Newsletter_copy and www.issuu.com/neaipg/docs. Design and layout by Kim Burger and Dick Young. Section Members and Advertisers are alerted to each issue by email. Many thanks are extended to all who helped in compiling this issue.

2025 NE-AIPG EXECUTIVE COMMITTEE AND SUBCOMMITTEES

PRESIDENT

Kelly A. Weyer, CPG-11826
Clean Globe Environmental LLC
PO BOX 1895, New City, NY 10956
Work: 1-888-454-5923, Ext. 700
E-mail: kweyer@cg-env.com

PRESIDENT ELECT/VICE PRESIDENT

OPEN POSITION

PAST PRESIDENT

Jennifer Rhee, MEM-2805
HDR Inc.
1 International Blvd, Floor 10
Mahwah, NJ 07495
Work: (201) 335-9336
Cell: (845)-664-5218
E-mail: jennifer.rhee@hdrinc.com

SECRETARY

Mitchell T Ward
FPM Remediations Inc.
181 Kenwood Ave
Oneida, NY 13421
Work: 315-336-7721 ext. 230
E-mail: m.ward@fpm-remediations.com

TREASURER

Scott M. Hulseapple, CPG-11363
Alpha Geoscience
679 Plank Rd.
Clifton Park, New York 12065
Work: (518) 348-6995
E-mail: shulseapple@alphageoscience.com

MEMBERS-AT-LARGE 2024-2025

Adam Kaiser, ECP-1106
Ramboll
333 West Washington Street
Syracuse, New York 13202
Cell: (718) 551-5627
E-mail: Adam.brian.kaiser@gmail.com

Laurie Scheuing, CPG-09898
46 Homestead Rd
Saratoga Springs, NY 12866-5808
Work: (518) 695-9445
E-mail: lescheuing@aol.com

Stacy Stieber, CPG-11696
WSP USA
6 Research Drive, Suite 260
Shelton, CT 06484
Work: (475) 882-1723
E-mail: Stacy.Stieber@wsp.com

MEMBERS-AT-LARGE 2025-2026

Martin Derby, P.G., CPG-08269
WSP
40 La Riviere Drive, Suite 320
Buffalo, NY 14202
Work: 716-725-1182
Email: martin.derby@wsp.com

Jim Ridenour, CPG-09998
NYS DOH, Bureau of Toxic Substance Assessment
Corning Tower, Room 1743
Albany NY 12237
Work: 518.402.7800
Email: Jim.Ridenour@health.ny.gov

Lou Russo, CPG-11591
York Analytical Laboratories, Inc.
50 Gedney Street
Nyack, NY 10960
Work: 203-325-1371
Email: lrusso@yorklab.com

Possible Alternative

Trevor M. Gowan, MEM-1995
Alpha Geoscience
679 Plank Road
Clifton Park, New York 12065
Work: (518) 348-6995
Fax: (518) 348-6955
E-mail: tgowan@alphageoscience.com

SCREENING BOARD CHAIRMAN

Dennis G. McGrath, CPG-08578
1133 Warburton Avenue, Apt 211N
Yonkers, NY 110701
Work: (914) 424-8816
E-mail: mcgrathdg@gmail.com

NEWSLETTER EDITOR

Kim Burger
Roux Environmental Engineering and Geology, D.P.C.
209 Shafter Street
Islandia, New York 11749
E-mail: kburger@rouxinc.com

DIRECTORY OF MEMBERS EDITOR

Curtis A. Kraemer, CPG-06019
111 Van Cedarfield Road
Colchester, CT 06415
Work: 860-861-4644
E-mail: curtkraemer@comcast.net

PUBLISHER & ADVERTISING MANAGER

Richard H. Young, CPG-03356
Consulting Geologists, LLC
179 Intervale Road
Parsippany, NJ 07054
Work: (973) 335-2289
E-mail: ryoungnj@aol.com

WEBMASTER

Kelly Weyer
Clean Globe Environmental LLC
PO BOX 1895, New City, NY 10956
Work: 1-888-454-5923, Ext. 700
E-mail: kweyer@cg-env.com

(Executive Committee continued on page 7)



Delta Well & Pump Co., Inc.

WATER AND ENVIRONMENTAL DRILLING

97 Union Avenue PO Box 1309 Ronkonkoma, N.Y. 11779

Phone: (631) 981-2255

Fax: (631) 981-2369

Delta serves municipal and industrial customers

Providing a full range of drilling capabilities



(Executive Committee continued from page 5)

**2025 NEAIPG EXECUTIVE COMMITTEE
AND SUBCOMMITTEES**
(As updated 2/15/2025)

Advertising Sales: Dick Young

Advisory Board Delegate: Kelly Weyer

Financial Planning and Treasury: Scott Hulseapple, Dick Young

Legislative Liaison and Registration: Tom West (NY),
Sam Gowan (NY), Tim Stone (ME), Dorothy Richter (NH),
Laurie Scheuing (NY)

Membership: OPEN POSITION

Mentoring: Dennis McGrath (Chairperson), Chris Brown

Nominating: Kelly Weyer

Public Affairs: Dennis McGrath (Chairperson)

Scholarship: Kelly Weyer (Chairperson), Martin Derby, Eric Gingras,
Adam Kaiser, Al Moffit, David- Olaoluwa Oladuji, Tom West

Section Directory: Curt Kraemer, Editor; Dick Young, Publisher

Section Meetings: Kelly Weyer

Section Newsletter: Kim Burger, Editor; Dick Young, Publisher

Screening Board: Dennis McGrath (Chairperson); William Prehoda,
James Moore, Kelly Weyer

2025 EXECUTIVE COMMITTEE MEETING SCHEDULE:

January 6th

March 3rd

April 16th — Spring Meeting with HMPGA Student Expo

May 5th

July 7th

September 9th

October - Fall Meeting TBD

December 1st

**ExCom Meetings are
typically held from
4:00 to 6:00 pm via
Zoom.**

(End)

2025 INDEX OF ADVERTISERS

ENVIRONMENTAL CONSULTANTS

AECOM	<u>23</u>
Alpha Geoscience	<u>24</u>
Arcadis	<u>42</u>
C.A. Rich Consultants, Inc	<u>33</u>
CHA	<u>37</u>
CSG Environmental Consultants	<u>51</u>
EAI, Inc	<u>14</u>
EWMA	<u>13</u>
FPM-Remediations	<u>43</u>
GEI Consultants, Inc	<u>36</u>
GEOSPHERE Environmental Management, Inc.	<u>29</u>
Hager GeoScience, Inc	<u>47</u>
Hager-Richter Geoscience, Inc	<u>39</u>
Haley & Aldrich	<u>38</u>
Lincoln Applied Geology, Inc	<u>38</u>
MC Environmental, LLC	<u>13</u>
McLane Environmental, LLC	<u>29</u>
PVE	<u>39</u>
Regenesis	<u>23</u>
Richter Geology PLLC	<u>38</u>
RPI Group	<u>53</u>
Roux Associates, Inc	<u>11</u>
Tectonic Engineering	<u>47</u>
Terracon	<u>28</u>
TRC Environmental Corporation	<u>36</u>

DRILLING

AARCO Environmental Services Corp	<u>64</u>
Allegheny Instruments, Inc	<u>56</u>
Boyd Artesian Well Co., Inc	<u>63</u>
Cascade Drilling	<u>Inside Front Cover</u>
Connecticut Test Borings, LLC	<u>56</u>
Directional Technologies, Inc	<u>67</u>
Drilex Environmental, Inc	<u>3</u>

(Index of Advertisers continued on page 9)

2025 INDEX OF ADVERTISERS (Cont.)

DRILLING (Cont.)

Eastern Analytical, Inc.....	55
General Borings, Inc.....	49
Geophysical Applications, Inc.....	65
Maine Test Borings.....	68
MB Drilling, LLC.....	59
New England Boring Contractors of CT, Inc.....	65
Pennsylvania Drilling Company.....	66
Probe Support Services.....	10
Soil Mechanics Drilling Corporation.....	58
Soil Testing, Inc.....	63
Stephen B. Church, Co.....	66
Zebra Environmental.....	62

ENVIRONMENTAL FIELD SERVICES

Alpha Analytical.....	48
Atlantic Screen & Mfg., Inc.....	74
Badger Injection Solutions.....	75
Complete Environmental Testing, Inc.....	74
ConeTec, Inc.....	51
Delta Well & Pump Co., Inc.....	6
EnviRent Corporation.....	77
Enviroscan.....	71
Envirosite Corporation.....	76
GEOD Corporation.....	70
Island Pump and Tank.....	77
Layne Christensen Company.....	43
Samuel Stothoff Company, Inc.....	74
SJB Services, Inc.....	76
X-ray Utility Locating Service.....	73
York Analytical Laboratories, Inc.....	24

www.geoproberentals.com

Rentals & Repairs

Ready
for
Spring?



Geoprobe® RIGS FOR RENT
7822DTs • 54LT tracks
420M Portables
*plus Tooling
and Trailers*



888.215.4666

info@rentaprobe.com

PROBE
SUPPORT SERVICES
www.geoproberentals.com

RENTAL • REPAIR • SERVICE • MAINTENANCE



Presidential Ramblings WINTER 2025



By NE-AIPG President Kelly Weyer, CPG-11826

Greetings Northeast Section and Friends of the Section!

NE-AIPG began 50 years ago in 1975 as a successor to the New York Section that was established 59 years ago, on July 7, 1966. In 2025, dedicated geologists, with a shared interest in supporting the profession and the individual geologists, continue to volunteer to drive NE-AIPG forward by providing educational and networking events, opportunities for collaborating and socializing, and supporting students through student focused events and support of the ATMGS.

Our success is only possible because of the interested and dedicated geologists that support NE-AIPG through continued membership, and by participating in events and offerings. We represent the northeast United States from NJ to ME, and we aspire to support geologists in all regions,
(Ramblings continued on page 12)

ROUX

- Brownfield Redevelopment
- Phase I & Phase II ESAs
- Constructed Treatment Wetlands
- Wetland Delineations and T&E Evaluation/Permitting
- Petroleum Remediation
- Stormwater/Wastewater Management
- Remediation Designs
- Litigation Support

For more info: 1.800.322.7689 or www.rouxinc.com

California • Illinois • Massachusetts • New Jersey • New York • Texas • Virginia

(Ramblings continued from page 11)

in all levels of their careers, and in all disciplines of geology. Let us know what you're up to, whether that means contributing to the "News of Members" in the quarterly newsletters, suggesting a location for a field trip, seeking advice or information, or collaborating on an event if you are active with a local geological organization.

2025 marks the start of the two-year term for Executive Committee (ExCom) Officers and three of the six At-Large Members. They will join the 2024/2025 At-Large Members (Adam Kaiser, Laurie Scheuing, and Stacy Stieber) to work on activities to benefit the membership. We are excited to see what NE-AIPG will accomplish in the next couple years.

A huge thank you goes to the 2023/2024 ExCom officers for sticking around for another term to continue the growth and success of NE-AIPG. The 2025/2026 offices are Past-President - Jennifer Rhee, President - Kelly Weyer, Treasurer - Scott Hulseapple, and Secretary - Mitchell Ward. We are still searching for a Vice President (President-Elect) and we hope to fill the position during 2025.

Thank you to the outgoing 2023/2024 At-Large ExCom Members: Michael Grifasi, Trevor Gowan, and Scott Tucker. Their time and input over the last two years was valuable and much appreciated. Welcome to our incoming 2025/2026 At-Large ExCom Members: Martin Derby, Jim Ridenour, and Lou Russo. We look forward to working together to plan opportunities for NE-AIPG members.

According to the US Bureau of Labor Statistics (<https://www.bls.gov/>), the need for qualified geological professionals is expected to increase through 2033. They relate the increase to replacing workers as they are promoted throughout their careers, transfer out of the profession, exit the workforce, or retire. They suggest that the industries in need of geologists throughout this decade are focused on energy, environmental protection, and responsible land and resource use.

This is great news for the outlook of the profession. The challenge now is to generate interest in the profession and to encourage and support geologists throughout their careers, and to have a larger presence in society and in planning and decision making.

As geologists, we understand that there are specific bits of knowledge and skills gained through a geological-focused education and training that are not gained through an environmental or engineering focus. Many of you may have seen statistics or heard announcements that geology majors are on the decline, and that geology departments are dissolving or

(Ramblings continued on page 15)



www.mc-environmental.net

MC ENVIRONMENTAL, LLC

Environmental Services & Consulting

Hydrogeology Water Resources Compliance

26 Railroad Avenue, No.182 Babylon, NY 11702-2204

631 321 4500

Fax 631 321 0190



An Environmental Consulting
& Remediation Firm

Timely Response. Time-Proven Solutions.

- Guaranteed Fixed-Price Remediation
- Environmental Due Diligence
- Regulatory Compliance
- Litigation Experts and Environmental Forensics
- Indoor Air Quality

Call the experts at EWMA to assist with
your environmental questions.

(800) 969-3159
www.ewma.com

Parsippany, NJ
Hamilton, NJ
New York, NY





EAI INC

ENVIRONMENTAL MANAGEMENT SERVICES
SPECIALTY CONTRACTING

YOUR **EXPERT** IN VAPOR INTRUSION.

STELLAR WORKMANSHIP.

A specialty services contractor for over 30 years, the EAI team delivers stellar installations and support for the most complex mitigation of vapors and water intrusion. Contact us to discuss your project.

- CETCO Liquid Boot & GeoVent
- Sub-Slab Depressurization
- Gas Monitoring Systems
- Design/Build Services
- Waterproofing
- Air Barriers
- Specialty Contracting

Jersey City, NJ, Fernandina Beach, FL
& Charlotte, NC

201-395-0010

www.eaienviro.com



(Ramblings continued from page 12)

merging with other disciplines to create combined departments with an environmental or climate focus. As the profession is on the incline and graduates entering the workforce are on the decline, one can quickly notice a growing imbalance.

NE-AIPG, AIPG, and other national, regional, and local geological organizations play a vital role in trying to close the growing imbalance between job openings in the geological sciences and qualified geology graduates and professionals. Each organization focuses on different objectives, whether it's on licensing and standards, on ethics, integrity and competence, on providing social and educational opportunities for members, or a combination of objectives.

The first NE-AIPG events of this year are two Winter Webinars and a Spring Meeting and Student Expo. The first webinar is scheduled for February 20th, and the second will be in March. The Spring Meeting will be a joint event with the Hudson Mohawk Professional Geologists Association's (HMPGA) annual Student Expo Meeting. We are planning an afternoon field trip, a student poster session, professional/career networking and socializing, dinner, and a technical talk in the Latham/Albany area. Details are still in the works. The call for student presenters is now open, check out the website!

We have our sights on mid-October for our in-person Fall Meeting, and we are gathering ideas for the date and location. We make a reasonable effort to keep the website up to date with upcoming events, so check the website frequently and watch your emails for updates on NE-AIPG and the northeast geological community.

As always, if you have any needs, ideas, or suggestions for field trips or talks in 2025 or beyond, we are happy to hear from you, whether you can volunteer to lead a trip or talk, or just have an interest in a location or topic that you'd like us to consider. You can email us at info@ne-aipg.org with suggestions or questions at any time. We hope you have a great 2025, and we hope to see you at an event this year!

Stay Warm, this Winter

Kelly Weyer
NE-AIPG President



(End)



NE-AIPG

webinar

NE-AIPG Webinar *Approved for 1 PDH!*

Approved for 1 professional development hour (PDH) by New York State Council of Professional Geologists (NYSCPG, <https://nyscpge.wildapricot.org/Continuing-Education>) and meets the requirements for the accreditation of Design Professional continuing education courses established by the laws, rules, and regulations of New York State

When: Thursday, February 20, 2025; 6pm-7pm

Where: Online – live Zoom Webinar

What: Talk title - “Exposure dating in sub-ice material from Greenland”

Cost: Member w/PDH \$25, Member no PDH \$20, Non-Member w/PDH \$40, Non-Member no PDH \$35

Detail and Registration: Registration will open soon on the NE-AIPG website (<https://ne-aipg.org/meetinginfo.php?id=44&ts=1736541660>)

Presenter:

Allie Balter-Kennedy; (<https://cosmo.ldeo.columbia.edu/people/allie-balter-kennedy>); Allie is a postdoctoral scholar in the Lamont Cosmo Lab, addressing questions of ice sheet stability and subglacial processes using cosmogenic-nuclide techniques.

Abstract:

The Greenland Ice Sheet (GrIS) is now one of the largest contributors to rising sea level and melt from this critical ice mass is expected to accelerate in the coming decades. Understanding how the GrIS responded to warming in the relatively recent geologic past help improve the glaciological and sea-level models that predict future change. Sediment and bedrock beneath modern ice sheets archive evidence of reduced ice-sheet extent when climate conditions were favorable for deglaciation, including during the Holocene and other Pleistocene interglacials. Recent developments in subglacial access drilling and geochemical analytical methods have now made it possible to obtain direct evidence for ice-sheet vulnerability to warmer climates from the yet unexplored basal zone of ice sheets.

In this talk, I will present ongoing work from the GreenDrill project to understand the sensitivity of the northern GrIS to Arctic warmth during the Holocene and other Pleistocene interglacials.

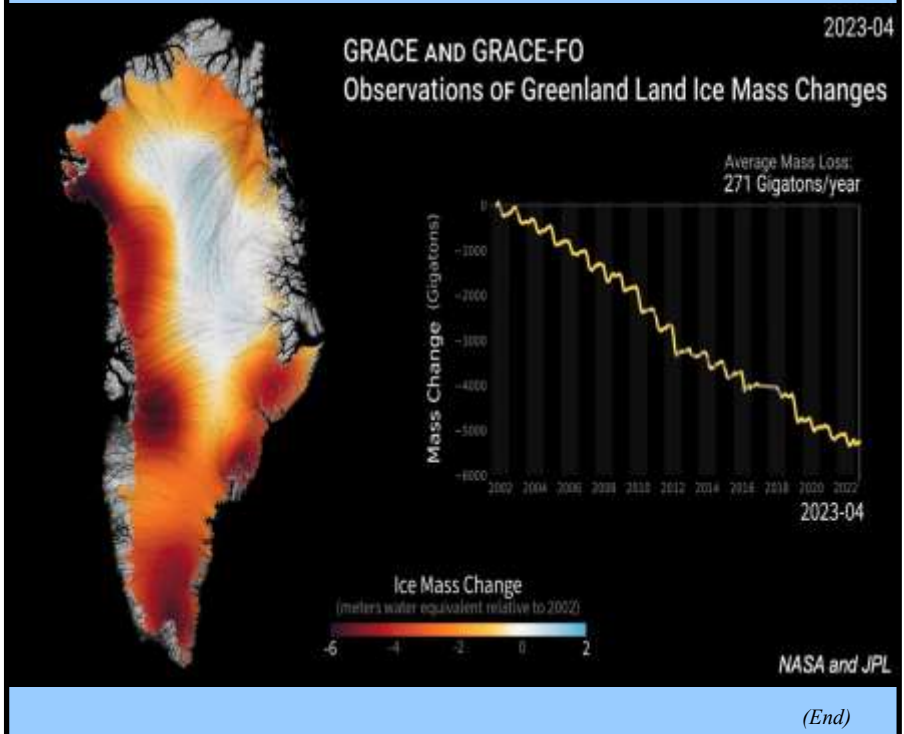
(Webinar continued on page 17)

(Webinar continued from page 16)

In 2023 and 2024, we drilled through the GrIS at strategically selected locations in northern Greenland to recover sub-ice sediment and bedrock cores. We are applying two complementary dating techniques - cosmogenic-nuclide exposure dating and luminescence dating - to help us constrain when these sites, which are covered by the ice sheet today, were ice-free in the past. We are also using ice-sheet modeling to explore what ice-free conditions at our drill sites might mean for overall GrIS contribution to sea level. Our work is ongoing, but I will present initial findings from a 7.5-m-long core collected beneath the ice divide at Prudhoe Dome, northwest Greenland (509 m ice thickness), that comprises 3 m of frozen sediment atop 4.5 m of gneissic bedrock. Cosmogenic-nuclide concentrations throughout the sediment and bedrock, and, crucially, the rate at which they decrease with depth in the core, imply exposure within a few meters of the Earth's surface during warm periods of the last ~3 million years. Ice-sheet modeling suggests that such ice-free conditions at Prudhoe Dome require, at minimum, GrIS-wide mass loss equivalent to a 0.19–0.73 m global sea-level contribution.

Learning objectives:

1. Understand how reconstructing ice-sheet response to warming in the geologic past helps us predict its present and future behavior.
2. Understand how geochemical dating techniques, particularly cosmogenic-nuclide exposure dating, help us learn about past ice retreat.



2024 NYSCPG Geology Days Conf.

By John M. Nadeau, CPG-1181 NYSCPG Executive Director

The New York State Council of Professional Geologists (NYSCPG) is grateful for the 350 people who attended the third annual Geology Days Conference from November 11-13, 2024, in Saratoga Springs, New York. It was great to have returning attendees, along with many new ones, join us for our largest event to date. The conference allowed professional geologists, engineers, and sponsors to interact and network, while providing continuing education credit to New York State Design Professionals.



The conference has been approved for Connecticut Licensed Environmental Professional (LEP) continuing education credits, and interested attendees can contact support@nyscpg.com for more information.

Attendees took part in the Membership meeting on Monday which provided an update of NYSCPG's activities in 2024 and the direction for the future. The meeting was followed by the ice-breaker event that evening that allowed everyone to catch up with colleagues. Tuesday and Wednesday offered the options of thirty presentations to earn professional development hours (PDH). The keynote dinner on Tuesday was presented by Andrew Kozlowski, Ph.D., P.G. of the NYS Geologic Survey (*in picture at left*) and was co-sponsored by the Hudson Mohawk Professional Geologists.



Conference participants were able to get out of the hotel and enjoy the fresh November air while earning PDHs on two field trips. The NYSCPG appreciates the support of the Northeast Section of the American Institute of Professional Geologists for sponsoring both of

(Geology Days continued on page 19)

(Geology Days continued from page 18)

these excursions. Tuesday's trip was led by Mark Williams, P.G. of C.T. Male and Derek Ersbak, P.G. of P.W. Grosser, who led over 50 people focusing on the *Stratigraphy, Structure, and the Mineral Waters of Saratoga Springs*. The trip gave the participants an opportunity to sample the waters of each of the springs around Saratoga for over four hours. Wednesday's trip to the Albany Pine Bush was led by Neil Gifford and David Franzi, Ph.D., P.G., was also attended by over 50 people. The group learned various geologic aspects of the Pine Bush dunes and walked throughout the preserve to take in the sites and learn about preservation efforts.

Two ethics presentations provided information regarding the regulated practice of geology and business practices. The panel discussion on Tuesday was led by Eric Greppo, P.E., the Executive Secretary of the State Board for Engineering, Land Surveying & Geology, and provided the perspective of NYSED



Rules and Regulations, established design professional ethical guidance, and generally recognized concepts of the Standard of Care. NYSCPG's Executive Director John Nadeau, P.G. and Lobbyist Campbell Wallace, Esq. of Pastel Rosen & Wallace LLP offered insight on how to apply the topics covered in the panel discussion into everyday practice.

The NYSCPG Board appreciates the volunteers who helped coordinate and run the event. The volunteers included students from Syracuse University and SUNY Oneonta who helped with checking in attendees during each presentation. We would also like to take the opportunity to thank our sponsors again who keep the event costs low for attendees. We had over twenty exhibitors displaying their companies during the week, and it was good to see participants interacting with these people during the breaks. Finally, thank you to all the attendees for making the trip to Saratoga to take part in the event.

NYSCPG is already planning the fourth annual event! We welcome those who attended to participate in [this brief survey](#) to provide feedback that will be utilized for planning Geology Days 2025. Look for an announcement in the coming weeks for the 2025 date and venue.

(Geology Days continued on page 60)



**Angelo Tagliacozzo
Memorial Geological
Scholarship
2024-2025**

**By Kelly Weyer, CPG-11826
Scholarship Chairperson**

**The 39th Annual Angelo Tagliacozzo Memorial
Geological Scholarship (ATMGS) Update**

The 2024-2025 ATMGS applications are under review! We received 25 applications, which is over double the number we received last year, and five more than two years ago.

For the review process, each ATMGS Committee member reviews each application and completes an individual evaluation form. The individual evaluation forms are combined in a composite evaluation form that is used to make recommendations for the awards. The number and value of awards depends on the applicant pool and funds available.

The ATMGS Review Committee plans to present the award suggestions at the ExCom meeting on March 3rd, 2025. The ExCom plans to finalize the awards at or soon after the meeting, and recipients should receive awards by early May.

For more information on the ATMGS, please visit the NE-AIPG's website https://ne-aipg.org/Scholarship_Information and see [Pages 78-81](#) in this newsletter.

If you know a Geology student who will be a junior or senior for the 2025-2026 ATMGS season, make sure they know about this opportunity. The next scholarship application is expected to open in September 2025.

Have you donated to the ATMGS fund this year? We encourage you to do so, to ensure we can continue providing substantial awards to future Geologists, and to support the continued success of the profession. You can donate using the form on [Page 81](#), or online through the [NE-AIPG website](#).

Thank you to everyone who has supported the ATMGS program (through dollars or time) over the years, and an extra thank you to those who contribute every year!

(End)



HMPGA & NE-AIPG

STUDENT EXPO & PROFESSIONAL/CAREER



NETWORKING - APRIL 16, 2025

www.hmpga.net / www.ne-aipg.org

Attention All Students!
CALL FOR STUDENT PRESENTERS

HMPGA, in collaboration with NEAIPG, is hosting the
7th Annual Student Poster Exposition and Professional/Career Networking Event!

This is an opportunity for undergraduate, graduate, and post-doc students in geoscience or related fields to present their research to their peers and professionals at an open poster session during HMPGA's monthly meeting, in conjunction with NE-AIPG's Spring Meeting. Topics of research presented should relate to geophysics, hydrogeology, geochemistry, or other geology or earth & environmental science related sub-fields. Posters from previous presentations with GSA, AGU, etc. are welcome and encouraged!

This meeting is intended to bring together professional geologists and students in the geosciences, and has historically been well-attended by geologists, engineers, and scientists from academic, government, and consulting sectors. **Students should make sure a bring copy of their résumés!**

The exposition and networking event is **FREE** to presenting students, including dinner!

Date: Wednesday, April 16th, 2025

Location: TBD Albany/Latham, NY	Time: Poster Session	5:00pm
	Dinner	6:00pm
	Presentation	7:00pm

Following the dinner, an evening talk will be presented on a topic of professional geology or related subject matter. *There will be an afternoon field trip as well, stay tuned for details!!*

Poster Session Registration:

Current students and recent graduates of winter 2024/2025 are encouraged to present at this open poster session, but all students are welcome! Contact Kelly Weyer (NEAIPG) at kweyer@cg-env.net or Jonathan Dippert (HMPGA) at J.Dippert@ctmale.com if you are interested in presenting a poster. Geosciences faculty members are encouraged to attend this event.

The Hudson-Mohawk Professional Geologists Association (HMPGA) was established in 1994 to provide an open forum to strengthen and advance the geological sciences. HMPGA fosters the open exchange of ideas and disseminates information regarding the geological sciences to the community. HMPGA is affiliated with the American Institute of Professional Geologists (AIPG) to help facilitate the exchange of information regarding professional activities on a state, regional and national level. Participants in the organization include working professionals from both the private and public sector; educators from colleges, universities, and high schools; and avio enthusiasts.

HMPGA & NE-AIPG



HUDSON-MOHAWK PROFESSIONAL GEOLOGISTS ASSOCIATION (HMPGA)
&
NORTHEAST SECTION OF THE AMERICAN INSTITUTE OF PROFESSIONAL GEOLOGISTS (NE-AIPG)



The New York State Museum and the New York State Geological Survey (NYSGS) have been neglected to the detriment of the State's citizens, and the State's geological community. The time for action is upon us – there is legislation (<https://assembly.ny.gov/leg/?bn=A08851&term=2023>) that if enacted would support the Museum's mission, and by extension that of the Geological Survey. By contacting your Senator and Assembly Member (<https://www.nysenate.gov/find-my-senator> and <https://nyassembly.gov/mem/search/>), you can call for its passage. Below is the full story of how we got here, and our path forward...

There have been multiple articles written in the New York Times and the Albany Times Union over the last several months regarding the state of the Museum. I bring this to your attention in case you do not know that the NYSGS is an agency of the Museum. The last New York Times article regarding the decline of the Museum was published on October 19th (<https://www.nytimes.com/2024/10/19/nyregion/state-museum-ny-albany.html>) and specifically references claims made regarding the NYSGS. The article discusses ongoing state and federal investigations to evaluate whether the Museum received excessive federal funding from the United State Geological Survey (USGS). The article also mentions allegations that Museum administrative staff engaged in a timecard scheme to bilk federal funds. An investigation by the State Education Department's Bureau of Labor Relations found the allegations were unsubstantiated.

While NYSCPG is not aware of any specific allegations, we are aware of the historical success of the NYSGS and particularly the geological mapping program that has had a long-standing and productive partnership with the USGS. Despite decades of declining staff and attrition of museum scientists trained in geology, the NYSGS appears to have been having a resurgence over the last several years. Numerous presentations have been made to various professional geological organizations, along with other public presentations, on the ongoing geologic research that shows an active and productive group of researchers that are producing high-quality scientific information despite funding issues within the Museum.

(Call to Action continued on page 32)

AECOM

**Imagine it.
Delivered.**

As a fully integrated firm, AECOM connects knowledge and experience across our network of experts to help solve our client's most complex challenges. From high-performance buildings and transit systems, to resilient communities and environments, our work is transformative, differentiated and vital.

aecom.com

Concerned about Site Remediation Budgets, Timelines and Technology Performance?

We can help.

- Scalable site remediation solutions for almost any budget
- Proven remediation technologies on over 20,000 sites worldwide
- Expertise and experience to meet timeline expectations
- Combined remedy approaches to maximize performance and cost savings

**www.regenesis.com
(949) 366-8000**

REGENESIS



Professional Geologic and Hydrogeologic Consulting

679 Plank Road, Clifton Park, NY 12065

Phone: (518) 348-6995

www.alphageoscience.com

Independent Laboratory Data Validation

Emergent Contaminants

- PFOS, PFOA, and other PFAS
- 1,4-dioxane

Quality Assurance/Quality Control

- Validation of soil, water, and air data
- Preparation of EDDs, SOPs, and QAPPs

Contact: **Scott Hulseapple, PG, CPG**
shulseapple@alphageoscience.com

Mining Services

Hydrogeologic Investigation

- Impacts to surface and ground water
- Potential impacts from mine inflows
- Mitigation of mine inflows

Mineral Resources

- Resource and Reserve Analyses
- Aggregates, Sand, and Gravel
- Industrial Minerals, Metals and Salt
- Permitting

Contact: **Steven Trader, PG, CPG**
strader@alphageoscience.com



The Environmental
Laboratory of Choice

Your Greatest Resource is our Customer Service

- ▶ Largest PFAS-only lab facility
- ▶ Fast turnaround times + rush service
- ▶ Expert staff and technical resources
- ▶ Dedicated York Force courier team

Comprehensive air, water and soil analyses with unmatched PFAS expertise.

Local Laboratories and Client Service Facilities

New York
Queens, Islandia, Nyack

Connecticut
Stratford, Newtown

New Jersey
Prospect Park, Toms River



Scan to visit
yorklab.com

(800) 306-YORK
(203) 325-1371
clientservices@yorklab.com
www.yorklab.com

For Drinking Water Testing:
You Need to Know
What's in Your H2O
YorkLabWaterTest.com

The Slayback Award

Anyone may provide written, descriptive nominations of candidates (and of their contributions to NE/AIPG) for the Slayback Award, by *CONFIDENTIALLY submitting the nomination in writing to any one of the previous recipients* (Dick Young, Dennis McGrath, Dan St. Germain, Tom West, Curt Kraemer, Bob Blauvelt, and Jeff Frederick).

The concept of the Russell G. Slayback Award is to provide: "Honor and Recognition of Exemplary Service, Above and Beyond, To the Northeast Section of AIPG." Thus, the Slayback Award is intended to be presented on those rare occasions when truly landmark, exemplary service has been given to the Northeast Section of AIPG for a protracted period of time by an AIPG Certified Professional Geologist who is a Member of the Northeast Section. "On those rare occasions" is the operative phrase, as the Slayback Award was never intended to be "presented annually."

Selection of Awardees is made by the previous recipients, in confidential discussions with the NE/AIPG Section President. Individual Members of the ExCom may be consulted for their input on a confidential basis. Confidentiality, to maintain the element of surprise in honoring the Recipient(s) and his/her/their long service, is a cornerstone concept of the Slayback Award.

Additionally, given that Russ was committed to helping/mentoring young Geologists and was a long-time, devoted proponent of the Northeast Section's Angelo Tagliacozzo Memorial Geological Scholarship Trust Fund, Donations In Memory and Honor of Russ Slayback may be made to the NE/AIPG Geological Scholarship Perpetual Trust Fund and should be written to: Angelo Tagliacozzo Memorial Geological Scholarship Trust Fund, and mailed to: NE/AIPG Geological Scholarship Trust Fund, c/o Scott Hulseapple, 679 Plank Rd, Clifton Park, NY 12065

Alternatively, you can make your Contribution, RIGHT NOW, ONLINE, by going to <https://ne-aipg.org/> and clicking "Donation To Scholarship Fund" (under **Quick Links** on the home page). All Contributions to the Scholarship Trust Fund are invested, perpetually, with earnings thereon used solely for the Scholarship. NE/AIPG bears all costs of administration. Please ask your employer about matching your tax-free contribution and about additional corporate contributions.

For further information, contact Kelly Weyer: neaipg.atscholarship2@gmail.com

(End)

NYSCPG NEWS

By John Nadeau (CPG-1181), Executive Director

As we quickly move through the remaining months of winter, I want to extend a final New Year's greeting to the members of NE-AIPG. I hope you all enjoyed time with family and friends over the holiday season and that your New Year has been fruitful. The passing of January marked the end of the third year of my role as Executive Director for NYSCPG. The Board has renewed my contract, and I look forward to continuing to serve the organization and you, the professional geologists. A lot has changed over the last three years, and I hope to continue to make a positive impact on the profession in New York State.

The New York State Legislative session began on January 8, 2025, and NYSCPG is lobbying for passage of two bills that will affect the profession. The first is the twelve-year ladder bill that proposes updating the geology licensing requirements by removing the provision allowing for a substitution of 12 years working experience for a university degree in geology. Anyone seeking to apply for licensure using the current 12-year experience ladder would be allowed to file an application within 2 years of enactment of the legislation. The legislation also changes reference to "intern geologists" to "geologists in training." Both aspects of the bill would align the profession of geology with similar changes made to engineering over the last couple of years.

The second bill NYSCPG will be pursuing will allow grandfathered engineering companies to receive certificates of authority to practice geology. The legislation would allow grandfathered engineering companies that employ at least one officer or director licensed as a professional geologist to practice geology. The exclusion of these firms from the original bill that established the profession of geology was an unintended consequence that both professions continue to try to correct. NYSCPG has been in contact with various members of the Legislature and other stakeholders regarding both bills and are working towards passage.

NYSCPG will be holding its annual Geology Rocks concert event at the Coliseum in White Plains, New York, on May 8, 2025. This networking event provides an opportunity for professionals to get together with colleagues and meet new friends, while enjoying music from the 80s and 90s. Tickets and sponsorships are currently available and can be purchased at the website <https://www.nyscpgeology.com/Geology-Rocks-2025>. NYSCPG will be offering a bus from Long Island, as in previous years, and New for 2025, a bus from the Capital Region.

Continuing Education has become a staple of professional life for geologists over the last couple of years. You must complete 36 contact hours of continuing education in each three-year registration period. Finding courses that are approved for NYS credit continues to cause questions across the state. The provider of courses must have the course you wish to complete approved for NYS credit. You can check the NYS Department of Education website at <https://www.op.nysed.gov/professions/geology/continuing-education-for-geology-q-a> for a list of approved course sponsors under question 17. Be careful of online providers offering courses, as there are some unscrupulous sites out there. If you have questions, the best solution is to contact the NYSED Board Office at geology@nysed.gov.

NYSCPG is looking for new ways to provide continuing education opportunities for geologists. We have started a new lunchtime talk series called Quarterly Geo Insights. The first talk, *Lessons Learned from PFAS Site Investigations & Development of Conceptual Site Models*, was held on January 29, 2025, featuring Chris Wenczel, P.G. of ERM. Visit

(NYSCPG News continued on page 27)

(NYSCPG News continued from page 26)

NYSCPG's website at <https://www.nyscpg.com/events> for future presentations as part of this series, along with other events offering PDH credits for Design Professionals in New York.

Planning for Geology Days 2025 is now under way, with the Call for Abstracts to be released in mid-February. Abstracts will be due by April 11th to be considered for this year's event. The conference is scheduled for November 11-13, 2025, at the Holiday Inn in Saratoga Springs. The hotel has plans for shuttle buses with off-site parking for this coming year. The event will be held Tuesday to Thursday this year, to align with the Veteran's Day holiday on November 11th, to allow for easier travel. Registration is expected to open June 11th, and we expect another sold-out event.

NYSCPG and Midwest Geosciences Group are co-hosting the two-day short course Modern Contaminant Hydrology at Vassar College, in Poughkeepsie, New York, on April 10 and 11. The content of this course is designed around the new textbook, Modern Contaminant Hydrology, written by Tom Sale and Joseph Scalia (2024). The goal is to advance modern conceptual foundations for contaminant transport in natural subsurface settings, in support of better use of finite cleanup resources. NYSCPG members can save \$200 off registration with the discount code NYSCPG-SAV200. Please visit the Midwest Geosciences' website at <https://midwestgeo.com/courses/contaminant2025.php> to register for the course.

I wrote to the geologic community in November regarding the NYS Geological Survey (NYSGS) and the position of the State Geologist. NYS Governor Kathy Hochul introduced a proposal to renovate the State Museum as part of her State of the State on January 14, 2025. The initial proposal earmarks \$150 million dollars to transform the museum and move it out from under the Education Department's control. The unknown in the proposal is how this may affect the NYSGS. NYSCPG will work to find out more details and craft a plan to promote the role of the geologist in the success of the museum. Further information will be shared with you all once we know more.

I hope to see many of you at in person events throughout the year. Please reach out to me with any questions or comments via email at jnadeau@nyscpg.com or by phone at 518-579-6580.

Regards,



John M. Nadeau, PG
NYSCPG Executive Director



(End)



Reliable.

Convenient Responsive Innovative

Your business objectives are our top priority. We deliver information on time so you avoid delays, surprises and costly mistakes down the road. For projects large and small, single- or multi-site, you can rely on consistent results nationwide.



Manchester, NH [603] 647 9700
Offices Nationwide terracon.com

Terracon

Geotechnical ■ Environmental ■ Construction Materials ■ Facilities

GEOSPHERE

ENVIRONMENTAL MANAGEMENT INC.

NEW HAMPSHIRE

MASSACHUSETTS

(603)-773-0075

(888)-838-6571

WWW.GEOSPHERENH.COM

GROUNDWATER SUPPLY

SITE ASSESSMENTS

LSP SERVICES

GEOTHERMAL

WETLANDS

PROFESSIONAL CONSULTANTS PROVIDING
GROUNDWATER & ENVIRONMENTAL SOLUTIONS

McLANE ENVIRONMENTAL, LLC

Range of Services

Ground Water Modeling

Contaminant Fate
and Transport

Aquifer Characterization

Remediation Design
and Optimization

Exposure and
Risk Assessment

Water Resources
and Supply

Natural Resource
Damages

Coastal Zone
Modeling

Wastewater
Disposal Analyses

GIS and
Data Visualization

Litigation Support



Providing ground water consulting services to clients nationwide, including:

- industrial corporations,
- law firms,
- municipalities,
- DOD, DOE, and others.

Specializing in ground water modeling, chemical fate and transport, well field optimization, and litigation support services.

Visit our web site at
www.McLaneEnv.com

E-mail: info@McLaneEnv.com

707 Alexander Road, Suite 206
Princeton, NJ 08540

Ph. 609.987.1400 Fax 609.987.8488



NEW JERSEY
HIGHLANDS
COALITION

Rappel for a Cause!



Saturday, May 31, 2025



CREATE CHANGE

Protect the places you love for future generations

CHALLENGE YOURSELF

Rappel 200 exhilarating feet down The Hilton

TRANSFORM THE FUTURE

Proceeds support vital conservation efforts

Register Today! Space is limited!

bit.ly/over-the-edge-nj

Contact: Jen Wanisko
jen@njhighlandscoalition.org



Every. Drop. Counts.

GEOLOGY ROCKS 2025

MAY 8TH 6:30PM
WHITE PLAINS, NY



We invite you to join us for Geology Rocks; a networking and fundraising concert event to support the New York State Council of Professional Geologists. The 2025 concert represents our **Fifth-annual** music-themed fundraiser event, featuring music of the 80s and 90s.

The Venue

The concert will be held at [The Coliseum](#), located at 15 South Broadway in White Plains, NY. There is off street parking in a nearby parking garage. Transportation to and from Long Island, the Capital Region, and the White Plains train station will be available.

Tickets

Tickets for this event are \$150 and include food and beverages for the evening. Consider buying tickets for this fundraiser for friends, clients, or co-workers to support NYSCPG. 10 Ticket bundles are available for \$1250, and **companies that purchase 10 or more tickets will be posted on our Website and LinkedIn!**

[Register Here](#)

Come and meet friends, old and new, and experience why this event has returned 4 years in a row!

This event will feature New-Funk era Music by **MR. Breakdown** from the 80's and 90's, lite fare and beverages are included.

We decided to open ticket sales early to give more opportunity to claim your space - tickets are going to sell out quickly!

[Sign up as a sponsor or get your tickets](#)

Sponsor Information

Contact Greg Wyka (president@nyscpgeology.com) or John Nadeau (jnadeau@nyscpgeology.com) for more details.

(Call to Action continued from page 22)

The New York State Museum and the New York State Geological Survey (NYSGS) have been neglected to the detriment of the State's citizens, and the State's geological community. The time for action is upon us – there is legislation (<https://assembly.ny.gov/leg/?bn=A08851&term=2023>) that if enacted would support the Museum's mission, and by extension that of the Geological Survey. By contacting your Senator and Assembly Member (<https://www.nysenate.gov/find-my-senator> and <https://nyassembly.gov/mem/search/>), you can call for its passage. Below is the full story of how we got here, and our path forward...

There have been multiple articles written in the New York Times and the Albany Times Union over the last several months regarding the state of the Museum. I bring this to your attention in case you do not know that the NYSGS is an agency of the Museum. The last New York Times article regarding the decline of the Museum was published on October 19th (<https://www.nytimes.com/2024/10/19/nyregion/state-museum-ny-albany.html>) and specifically references claims made regarding the NYSGS. The article discusses ongoing state and federal investigations to evaluate whether the Museum received excessive federal funding from the United State Geological Survey (USGS). The article also mentions allegations that Museum administrative staff engaged in a timecard scheme to bilk federal funds. An investigation by the State Education Department's Bureau of Labor Relations found the allegations were unsubstantiated.

While NYSCPG is not aware of any specific allegations, we are aware of the historical success of the NYSGS and particularly the geological mapping program that has had a long-standing and productive partnership with the USGS. Despite decades of declining staff and attrition of museum scientists trained in geology, the NYSGS appears to have been having a resurgence over the last several years. Numerous presentations have been made to various professional geological organizations, along with other public presentations, on the ongoing geologic research that shows an active and productive group of researchers that are producing high-quality scientific information despite funding issues within the Museum.

Increased federal funding in recent years has resulted in an increased number of published maps which NYSCPG has previously highlighted on our website and in articles. Many of the geologists in New York, professionals and academics alike, use the maps and data prepared by the NYSGS. Not only do these maps serve as important educational products, but these geologic publications serve society to help protect water resources, find aggregates to build and repair infrastructure and help identify locations of critical minerals needed to provide vital materials to support the state and national economy. The subsurface scientific coring and exploration drilling that has resulted from the cooperative federal-state partnership is having a profound impact to improve understanding of past climate, aquifers, and geothermal potential and will

(Call to Action continued on page 33)

(Call to Action continued from page 32)

likely provide vital information for predicting future climate change.

The NYSCPG's mission includes the strengthening and advancement of the geological sciences as a profession; promoting the protection of public health, the public welfare, and the environment; and promoting high standards of ethical conduct within the profession. NYSCPG views the federal resources awarded to the Museum to produce maps and collect high quality geologic data as a solid investment that is benefiting both the state and its citizens. The maps produced by the NYSGS help promote geology to the public and can be used to promote the protection of the public and the environment. We also believe that the NYSGS staff operate with an appropriate standard of care and high ethical standards and any investigation will show that allegations made against NYSGS staff to be unfounded and that they will be allowed to continue their critical work moving forward.

Where does that leave us, the professional geologists of New York, and what can we do to ensure that additional geological data continues to be collected and managed by qualified, competent geoscientists? Professional geologists have been aware of the financial struggles and lack of staffing of the Survey and Museum since the State Geologist role was vacated in 2010. Almost every state in the union has a Chief Scientist and State Geologist, except New York. New

(Call to Action continued on page 34)



Your Full-Service Environmental Expert Since 1982

NE/AIPG Thanks CA Rich
for Decades of Advertising Support in
NE/AIPG Publications!

Congratulations to Charlie Rich,
CPG 04433, on Selling His Company
to H2M!

(Call to Action continued from page 33)

York is the 4th most populous State and has a diverse landscape and highly variable geologic settings constructed from ancient tectonic events that occurred more than a billion years ago to glacial deposits as recent as 13,000 years old. The roles of the State Geologist are to manage the NYSGS; provide unbiased scientific information to state agencies; prepare and manage federal grants; oversee staff that conducts field work, curate the current mineral collections, and maintain the subsurface core collection; maintain the Empire State Organized Geologic Information System (ESOGIS); provide educational opportunities for the public; and serves as a technical resource to the State in response from catastrophic flooding, landslides, droughts and other emergency-related events.

As professional geologists we must request that a State as large and geologically complex as New York should maintain this key position within the Museum, which was founded by the original scientific efforts of the NYSGS in 1836. The Chief Scientist-State Geologist position typically directs and oversees the NYSGS technical staff, and the time to re-establish this key vacant role has come.

How do we accomplish this? It is election season, and candidates are canvassing neighborhoods and hosting town meetings. I call upon the geologic community to become as vocal as we did to ensure licensure passage a decade ago. The bill referenced at the beginning of this article (A08851) proposed to increase the county clerk fees from \$15 to \$25 with the revenue going to fund the Museum. Reach out to your elected officials and ask them to support that measure and in turn specifically fund the NYSGS and re-establish the State Geologist role. If you are unsure who your representatives are, please check out <https://www.nysenate.gov/find-my-senator> and <https://nyassembly.gov/mem/search/>.

There is an adage that the “squeaky wheel gets the grease,” and it is time for our profession to make some noise.

Please contact me with any questions via email at jnadeau@nyscp.org or by phone at 518-579-6580.



John M. Nadeau, PG
NYSCPG Executive Director



(End)

AIPG's Mentoring Program

Do you know AIPG has a Mentoring Program for AIPG Members at all levels of their careers?

Are you looking for advice as you start your career, or consider a career change, or retirement?

Are you enjoying a successful career and are able to provide advice or support to others as a Mentor?

AIPG's Mentoring Program is designed to encourage discussions between AIPG members.

You can participate in the program as a Mentor, a Mentee, or both!

For more details, visit

<https://aipg.org/page/MentoringProgram!>

AIPG's Career Center

Did you know AIPG has a Career Center?

Services include a job board for posting and searching for jobs, resume reviews, and more!

For more information, check their website at:

[https://aipg-jobs.careerwebsite.com/.](https://aipg-jobs.careerwebsite.com/)



TRC ENVIRONMENTAL CORP
41 Spring Street, Suite 102
New Providence, NJ 07974
908-988-1700 Fax 908-464-3712

- Ground Water Investigation and Remediation
- Soil Investigation and Remediation
- Ground Water Supply Development
- Underground Storage Tank Investigation
- ISRA Compliance
- Environmental Site Inspection and Audits
- Brownfields Investigation and Permits
- Litigation Support and Expert Testimony

Employment opportunities available for Geologists and Engineers at all levels

Visit:
TRCCompanies.com
To View All Current Job Opportunities

45 YEARS
OF
ENVIRONMENTAL
SOLUTIONS IN
NEW JERSEY

GEI provides geotechnical, environmental, water resources and ecological consulting and engineering services. We provide these services from planning and design through construction and operations. Our clients include government agencies, institutions, industries, developers, utilities and professional service firms.



For more information contact Bob Blauvelt at 973.873.7127
www.geiconsultants.com

GEI Consultants, Inc.
300 Broadacres Drive, Suite 100
Bloomfield, NJ 07003



The Transformative Power of Commitment

Inspiration from the words of
renowned author Kenneth Blanchard:

*"There's a difference between interest and
commitment. When you're interested,
you do it only when it's convenient.
When you're committed, you
accept no excuses; only results."*

These words underscore the transformative
power of commitment.



Providing Full Service Engineering, Planning and
Construction Expertise to Our Clients for Over 50 Years

Imagine

What We Can Do for You!

CHA

www.chacompanies.com
800.836.0817

**HALEY &
ALDRICH**

**Building communities.
Improving our infrastructure.**

Creating new possibilities with clients.

- Property development and brownfields reuse
- Remedial investigations, design and construction
- Environmental, health and safety management
- Energy facility and linear utilities development
- Underground construction risk management
- Sustainable design enhancement

25 Offices Nationwide • T. 617.886.7400 • HaleyAldrich.com



Steve Revell, CPG
President
Senior Hydrogeologist
Email: srevell@lagvt.com

163 Revell Drive
Lincoln, VT 05443
(802) 453-4384
FAX (802) 453-5399

RICHTER GEOLOGY PLLC

Dorothy Richter, P.G.
(NH, NY, PA, NC, KY, IL, MN)
President

603 231-7845
dorothy.richter@outlook.com
richtergeology.com

OVER TWO DECADES OF EXPERIENCE

GETTING IT DONE.

ENVIRONMENTAL SERVICES
CIVIL + LAND DEVELOPMENT
BUILDINGS + STRUCTURES

PVE-LLC.COM
(845) 454-2544
INFO@PVE-LLC.COM

PVE

HAGER-RICHTER

Geophysics for the Engineering Community

*National Reputation | Nationwide Practice
Take a Closer Look. You'll Like What You See.*

www.hager-richter.com

Main Office

8 Industrial Way—D10
Salem, New Hampshire 03079
T: 603-893-9944

NY / NJ Office

846 Main Street
Fords, New Jersey 08863
T: 732-661-0555

dba HR Geological Services in New York

2025 NJSRC CONFERENCE
HERE'S WHAT MAKES
THIS CONFERENCE
MUST ATTEND:

- ✔ Inspiring Kickoff
- ✔ Meet the Regulators
- ✔ Education by Pros, for Pros
- ✔ Interactive Trade Show
- ✔ Lunchtime Panel Insights
- ✔ Networking Opportunities
- ✔ Delicious Dining



 **MARCH 26th
& 27th, 2025**



REGISTER NOW



Hyatt Regency
New Brunswick, NJ

(NJ Conference continued on page 41)

NJ SITE REMEDIATION CONFERENCE 2025

Registration is NOW OPEN!

MARCH 26th & 27th



Hyatt Regency
New Brunswick, NJ



Don't miss LSRPA's 2025 NJ Site Remediation Conference (NJSRC) on March 26th and 27th at the Hyatt Regency in New Brunswick, New Jersey. The cornerstone event for professionals in the environmental field.

NJSRC 2025 provides educational programs tailored towards LSRPs, Geologists, Engineers and Attorneys involved in the environmental field.

2025 NJSRC Highlights include:

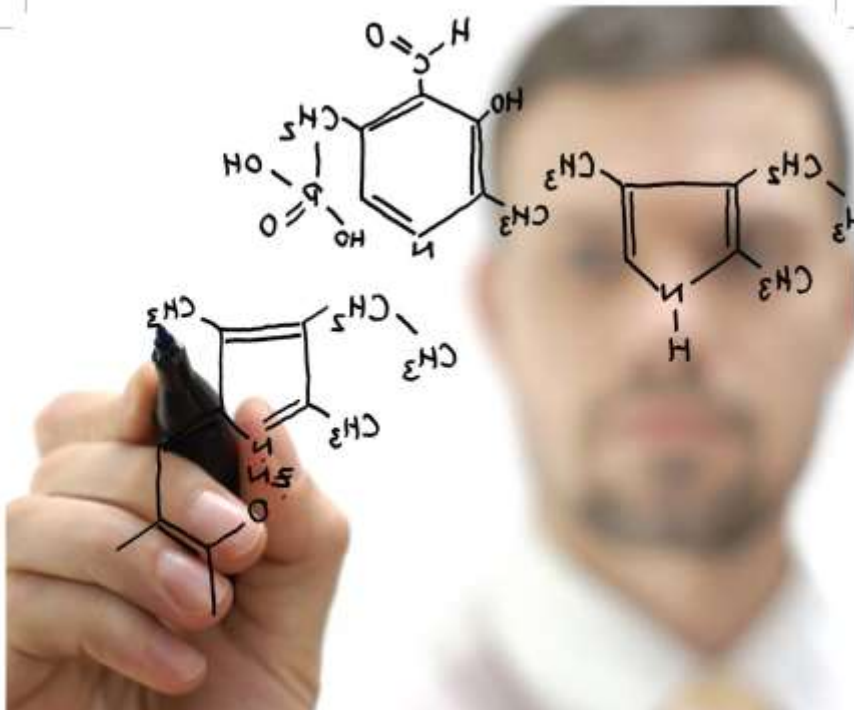
- An All-Access Pass – New for 2025, your All-Access Pass lets you participate in all conference programming, courses and activities
- NJDEP Topical Presentations followed by opportunities to Meet the Regulators
- Education by Professionals, for Professionals – covering topics ranging from Contaminants of Emerging Concerns with a focus on PFAS and microplastics, latest remediation methods, Climate Risk and Sustainability and more.
- Expanded Exhibitor Hall with more than 60 Exhibitors
- Networking Opportunities throughout the Conference
- More than 20 continuing education credits approved for NY PGs and self-certifying PHDs

Go to www.lsrpa.org or click here for more information and registration: [LSRPA's 2025 NJSRC](#)

As an industry partner with LSRPA for this event, NE-AIPG members receive a discounted rate!

**Discount Code for NE-AIPG Members to receive
LSRPA's member rate: NE-AIPG-2025NJSRC**

(End)



Solutions to complex challenges

A continually shifting world makes any engineering design solution difficult, often overwhelming. We help you overcome these challenges.

First, we start with you – defining true value and a successful outcome. With a deep understanding of the nexus between regulatory, technological and environmental drivers, we deliver certainty on cost-effective projects and programs that meet and exceed your goals.

Together we can do a world of good.

www.arcadis-us.com

Two Huntington
Quadrangle Suite 1510
Melville, NY 11747
631 249 7600

Imagine the result

 **ARCADIS**
Infrastructure | Water | Environment | Buildings

FPM Remediations, Inc.

An **Olgoonik** Company



8(a) Certified



Historically Underutilized Business Zone



- ◇ Self-Perform Investigation/Remediation Activities at Sites Impacted by Environmental Contaminants and Munitions
- ◇ Specialize in Performance-Based Contracting
- ◇ Certified/Licensed Engineers, Geologists, Scientists, Geophysicists, and Unexploded Ordinance Experts
- ◇ 20+ Years of DoD Experience
- ◇ DoD Advanced Geophysical Classification Accreditation Program (DAGCAP) Certified



FIND OUT MORE AT: WWW.FPM-REMIEDIATIONS.COM

Layne



**Resource Development
and Maintenance**



Water Treatment

Layne Christensen's well-trained field crews and experienced staff work with clients to:

- Develop new water sources
- Rehabilitate existing wells, through either chemical or mechanical processes
- Provide pump service (new sales, repairs and installation)

Layne Christensen's professional engineers can assist in determining an appropriate treatment technology. We then fabricate systems scaled to each client's requirements.

Experienced • Equipped • Committed

... Since 1882

New England • (978) 937-2242
New York • (518) 295-8288
Long Island • (631) 218-0749

Connecting the Space – Red Rock Canyon to Joshua Tree National Park

By Michael G Grifasi, PG, Past President, NE/AIPG

In early 2024, a friend and I purchased tickets to a three-day music festival taking place that October in Las Vegas, where we would get a chance to see bands we haven't seen take a stage, in some cases, since the early aughts or, in other cases, ever. It was amazing but absolutely unrelated to this article. At some point, prior to this trip, my wife suggested I turn this into an extended vacation and use it as an opportunity to visit family and friends in Los Angeles and San Diego. So I did. And, within this timeframe, I visited two of my favorite places in the world - Red Rock Canyon and Joshua Tree National Park. To connect these two geologic wonders, I travelled the Mojave National Preserve with relatively proximate stops to the Kelso Dunes and the Amboy Crater. A quick aside: this entire trip was soundtracked by Rainer Maria (who I had seen the day prior and, coincidentally, am listening to now as I write).



While I spent a lot of meaningful time with family and friends on this vacation, the portions associated with this article were made up entirely of a late 40s, mediocre geologist (Me!), his backpack (lots of water, climbing shoes, chalk bag, and no sunscreen), a camera (it's just a phone), and a tolerance for risk that would have his

(Joshua Tree continued on page 46)

WE WANT YOU TO SHARE YOUR NEWS!

With over 500 Geologists in the NE Section of AIPG, we want to know what has been happening in YOUR workplace and life .

Help us by sending a short blurb to publisher Dick Young at ryoungnj@aol.com or editor Kim Burger at kburger@rouxinc.com. Your story will be part of the next Newsletter.

Need an idea?
Just email Dick or Kim!

**We cannot
wait to hear
about your
news!**



*NE-AIPG Newsletter
Feature Site:
Delaware Water Gap
between NJ and PA*



(Joshua Tree continued from page 44)

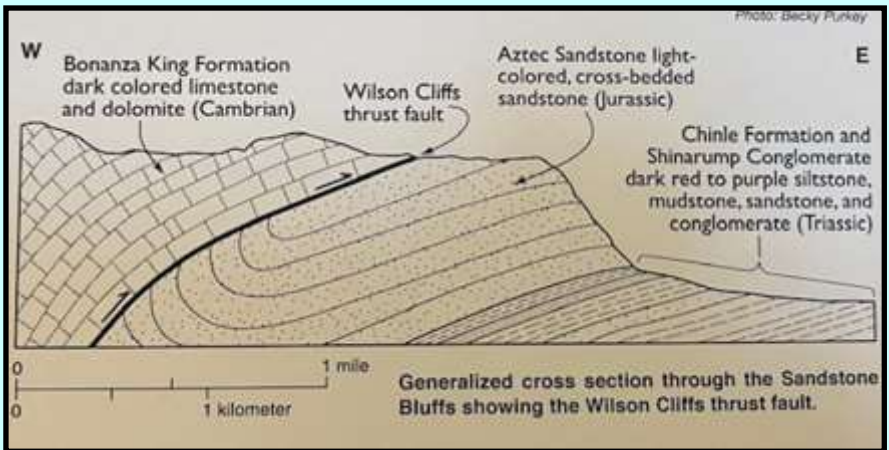
wife losing her mind if she knew what he was actually up to. What happens in Vegas ...

A quick note: If you haven't traveled these off-the-path desert roads before, it's very much like you see in films – maybe you'll see another traveler every 15 minutes or so. Otherwise, it's just you and many miles to the closest place of refuge. If your intent is grounding and reflection, this is where to do it.

Stop 1: Red Rock Canyon (a Thursday)

On a regular day, Red Rock Canyon is less than 30 minutes from Vegas and closer if you're staying with your family in Henderson. Note: the park has recently moved to a reservation system, which wasn't a problem for me this trip as you can reserve and purchase access at the gate. That said, when the weather is cooler and it's not a Thursday morning, you may want to plan ahead.

Walking the outcrops of Red Rock Canyon will have you standing on or around the Aztec Sandstone (Jurassic), Kayenta Formation (Triassic), and Chinle Formation (Triassic), with a view of the Bonanza King Formation (Cambrian) to your west (as part of the Keystone thrust system [which includes the Wilson Cliffs thrust fault]).



Red Rock Canyon generalized cross-section (Multiple authors, 2008; see References)

What immediately pulls your attention, and gives name to the canyon, are the massive red sandstone outcrops all around you. Within the Aztec Sandstone, cross-bedding features associated with aeolian depositional processes are typical.

Interestingly, the Aztec Sandstone is found throughout the southwest (named Navajo Sandstone in Utah and Arizona and Nugget Formation in Colorado and parts of Utah) and is thought to have been deposited in a vast desert sand dune environment (think the Sahara Desert).

(Joshua Tree continued on page 57)

Tectonic

Practical Solutions. Calculating Success.



www.tectonicengineering.com

800.829.6531

NY. NJ. CT. PA.

- NJ Licensed Site Remediation Professional (LSRP) Services
- Phase I/Phase II Environmental Site Assessments
- Industrial Site Recovery Act Services
- Tank Closures & Spill Investigations
- Vapor Intrusion Studies & Mitigation
- Remedial Design of Contaminated Soil/ Groundwater
- Terrestrial Ecological Evaluations
- Mold, Asbestos & Lead Management
- Subsurface Investigations & Geotechnical Engineering
- Geotechnical Instrumentation & Monitoring
- Vibration & Noise Monitoring
- Retaining Wall & Excavation Support Systems Design



HGI

HAGER GEOSCIENCE, INC.

Innovative solutions to Subsurface Problems

Almost 30 Years of Geophysical
Consulting Services for
Engineering, Environmental,
and Infrastructure Projects

PH +1-781-935-8111

hgi@hagergeoscience.com

Jutta Hager, Ph.D., P.G., President

jhager@hagergeoscience.com



Environmental laboratory solutions provided for your most demanding applications.

The 6th largest environmental testing laboratory in the United States and the largest privately family owned laboratory in the country with more than 50,000 square feet of state-of-the-art laboratory facilities offering:

-  Air
-  Sediment & Tissue
-  Forensic Petroleum
-  Regulatory Soil
-  Regulatory Water
-  Emerging Contaminants

For more information please contact us at 800-624-9220
info@alphalab.com
www.alphalab.com

Westborough, MA | Mansfield, MA | Brewer, ME | Portsmouth, NH
Mahwah, NJ | Albany, NY | Buffalo, NY | Rochester, NY | Syracuse, NY | Holmes, PA

(NOM continued on page 63)

Support Our Advertisers and Sponsors!

The Executive Committee reminds all our members to support the companies that advertise in this Newsletter and generously sponsor our meetings. Their support represents a major contribution that helps the Northeast Section continue its mission to promote the profession and build the cornerstone of our Section, the *Angelo Tagliacozzo Memorial Geological Scholarship Perpetual Trust Fund*. It is our advertisers and sponsors who make our Newsletter so successful and well-distributed, reaching more than 600 members across eight states.

Please let our advertisers and sponsors know you appreciate them by working with these companies whenever possible. Be sure to personally acknowledge their support when you speak with their representatives, and mention you saw their ad or sponsorship in our Newsletter.

Thank you to all our advertisers and sponsors!

SOIL
BORING

(203) 758-5817 Phone
(203) 758-0822 Fax

ROCK
CORING

Portable
Skid/Propane
Track
Truck Rigs



**General
Borings,
Inc.**
SUB-SURFACE INVESTIGATIONS

Monitor Well
Specialists
OSHA
Certified

OBSERVATION
WELLS

P.O. Box 7135
Prospect, CT 06712

CONCRETE
CORING

December 2024 MEETING MINUTES NE SECTION – AIPG
EXECUTIVE COMMITTEE MEETING

December 2, 2024

Kelly Weyer*	Michael Grifasi*	Lou Russo	Scott Tucker*
Jennifer Rhee*	Trevor Gowan*	Martin Derby	Scott Hulseapple*
Laurie Scheuing*	Stacy Stieber	Dick Young	
Adam Kaiser	Jim Ridenour	Mitchell Ward*	President-Elect Position open.

Called to order at 4:03 pm

Welcome Statements and Announcements

- ◆ No suggested additions to the meeting.

Secretary's Report (Minutes):

- ◆ The 11/19/24 emailed motion to approve Final July Executive Committee meeting minutes was passed via email responses on 11/21/24. Final minutes will be included in the Holidays (December) Newsletter.
- ◆ The Draft September Executive Committee meeting minutes were distributed this morning. Kelly suggested that the date for the next meeting was incorrectly identified as December 12 and should be changed to December 2. No other issues were raised. Laurie Scheuing made a motion to approve the September meeting minutes with revision of the raised issue as Final. Stacy Stieber seconded the motion. No discussion. Vote to approve Final September meeting minutes passed. Final minutes will be shared and included in the Winter (February) Newsletter.

Treasurer's Report

- ◆ September-November Section and Angelo Fund financial reports were shared with the Executive Committee today.
- ◆ Treasurer's comments – October convention expenses exceeded income for an overall loss. Scott Hulseapple to develop the 2025 budget before the next Executive Committee meeting.
 - ◇ Discussion: Does the Executive Committee need to vote on the annual budget? If the Executive Committee passed the budget via a vote, then we don't have to vote on items that agree with the budget throughout the year. The 2025 Executive Committee should vote on the 2025 budget, so the vote will be conducted early next year.
- ◆ Ongoing items
 - ◇ New Jersey agent for ATMGS is complete.
 - ◇ SurveyMonkey payment method needs to be changed before August. Kelly will work with Scott Hulseapple to resolve .
 - ◇ Consider opening Venmo or online payment to facilitate payments.

Reports from Committees

- ◆ Angelo Tagliacozzo Memorial Geological Scholarship (ATMGS)
 - ◇ Kelly gave a brief explanation of ATMGS and a status update. Approximately 30 applications have been started or completed so far this year be reaching out to persons who have expressed an interest in helping with this activity.

(Minutes continued on page 52)

SAFETY. QUALITY. PEOPLE. EQUIPMENT.

GLOBAL LEADERS IN SITE CHARACTERIZATION



Seismic Cone Penetration Testing (SCPTs)



Geophysical Testing



Over Water



In-Situ Testing (eVST, PMT, DMT)



Monitoring and Instrumentation



Drilling and Sampling

BETTER INFORMATION
BETTER DECISIONS

CONETEC.COM

CONETEC

CSIG

ENVIRONMENTAL CONSULTANTS

- ✓ property transfer site assessments
- ✓ groundwater development, management, protection, permitting
- ✓ UST closures and investigations
- ✓ litigation support

Carol S. Graff, CPG-06429
109 Renfrew Avenue
Trenton, NJ 08618-3335

Phone: 609-393-4442
FAX: 609-393-5999
E-mail: cgraff5297@aol.com

(Minutes continued from page 50)

- ◇ The online application closes tonight. A short extension will be provided for applications that have been started before the deadline.
- ◇ Kelly explained the path forward from this point: ATMGS chair will review applications for completeness, and then distribute to the ATMGS review committee for evaluation. At the March Executive Committee meeting, the ATMGS committee will present their evaluation of the applicants, and the Executive Committee will vote on awards. Awards are planned to be distributed to students by May.
- ◆ Publications
 - ◇ Holidays Newsletter is in the works for early December publication, delayed and updated from early November publication date .
 - ◇ Still seeking additional content for the 2025 Winter (February) Newsletter. Provide any content to editor by January 6, 2025.
 - ◇ Discussion: Do we want to reach out to regional geology groups, state geologists to request content about news each quarter? Dick noted that this is consistent with past practice of acquiring content from state geologists, NYSCPG, CNYPG, and HMPGA. Kelly will draft an email and a list of people we could ask for updates, and send to the Executive Committee for recommended additions.
 - ◇ Dick provided a brief update on Publications, Advertising Sales & Income. Ongoing requests for annual advertisements from companies to be included in 2025 newsletters.
 - ◇ Proposed 2025 Publication Schedule
- ◆ Meetings/Webinars/Events Committee
 - ◇ Fall Meeting on Friday October 11, 2024, at Dinosaur State Park, Rocky Hill, Connecticut.
 - ◆ Discussion of impressions after the event: Considered a successful turnout (30 attended). There was a balanced mix of experience levels between attendees. The significant number of attendees from CT demonstrates the growth potential in that area, and the benefit of holding meetings in each of the Northeast Section states.
 - ◇ Sponsored field trips at NYSCPG Geology Days on Tuesday November 12th and November 13, 2024.
 - ◆ Discussions of impressions after the event: The field trips were highly attended (up to about 60 people) and reached the upper limit of attendance that a single presenter is reasonably able to effectively manage and communicate to the group
 - ◇ Upcoming 2025 Events
 - ◆ Proposed 2025 Executive Committee Meeting Schedule.
 - January 6; March 3; April 16 – with HMPGA Student Expo; May 5; July 7; September 9; Mid-October (Scheduling in mid-October avoids overlap with the National Conference on October 4-7, 2025); December 1 (Discussion on whether to hold the last meeting on November 3rd or December 1st, 2025. In-person October Executive Committee meeting is sometimes less productive due to lower attendance, so a November meeting would shorten the gap after the September meeting. There is potentially a conflict in November with Geology Days depending on when that is scheduled. The December date was selected to avoid this conflict.)
 - ◇ 2024 Spring/Fall Meetings
 - ◆ Report - 4/17/24 Wednesday – Field Trip, Spring Meeting and Student Expo w/HMPGA.

(Minutes Continued on page 54)



TRAP & TREAT®

BOS 100®

BOS 200®

CAT 100

THE ORIGINAL AND MOST WIDELY APPLIED
**ACTIVATED CARBON
BASED IN-SITU
REMEDICATION
CHEMISTRIES
IN THE WORLD**

The RPI Group approach includes high density site characterization with pro bono laboratory support, expert project design, and professional installation.

19
YEARS

Celebrating our 19th year of unprecedented success returning environmentally compromised properties to their highest and best use.

Contact Derek Pizarro (610-517-8242, dpizarro@astenv.com) to learn if the RPI Group Approach to in-situ remediation is an option for your site.

(Minutes continued from page 52)

- ◆ Kelly requests that the Executive Committee check if these dates present conflicts, and they can be revised.
- ◇ PDH Webinars – Winter Webinar Series
 - ◆ Michael Grifasi anticipates January series, but will confirm. If possible, the confirmed timing will be provided to Dick in the next few days so that it can be added to the December newsletter.
 - ◆ Working on presentation ideas
 - ◆ Costs proposed (consistent with last year): w/PDH \$25/\$30, no PDH \$20/\$25
 - Discussion: Increase non-member costs by \$10 to encourage membership. No objections to increasing non-member rates as discussed
 - ◆ Spring Meeting with HMPGA Student Expo around Albany on Wednesday, April 16, 2025
 - The normal event space (Century House) is being renovated. HMPGA is discussing alternative venue, potentially including Common Roots in Albany or South Glens Falls. The NEAIPG Executive Committee is encouraged to communicate any suggestions for alternate venues that are within 1 hour of Albany
- ◆ ExCom and Committees
 - ◇ Ballot for 2025/2026 Northeast Section Executive Committee positions was sent to National for distribution to the membership.
 - ◇ Work on forming committees for next year.
- ◆ Student Outreach/Mentoring/Student Chapters
 - ◇ Discussion: Steps to approach outreach if anyone can.
 - ◆ The first step is to contact existing chapters to determine interest. For the Dormant Student Chapters listed on AIPG website, need to update or remove information.
 - City University of New York at Brooklyn College, Brooklyn, New York, Founded in 2018; Chapter Sponsor: Jennifer Rhee (nee Becker), MEM Faculty Sponsor: Matthew Grab
 - New Paltz State University of New York, New Paltz, New York, Founded in 2017; Chapter Sponsors: Christopher Brown, CPG and Gordon Magenheim, CPG Faculty Sponsor: Dr. Shafiu Chowdhury
 - SUNY Geneseo, Geneseo, New York, Founded in 2015; Chapter Sponsor: Dennis McGrath, CPG Faculty Sponsor: Nicholas Warner
 - ◆ If any live near a university, arrange to give a talk about AIPG there. NE AIPG has presentations that could be adapted to this purpose.
 - ◆ All ATMGS applicants are invited to future events. Should we consider sponsoring attendance at a meeting/event for ATMGS winners?

Correspondence

- ◆ One person called with interest in getting more involved with NE AIPG. Kelly and Mitch noted that attempts to connect with this person in November were unsuccessful and will be reattempted.

Old Business and New Business

- ◆ Website is being updated - Changing meeting dates.
- ◆ No new business noted outside of items mentioned above.

Closing Statements and Final Thoughts

- ◆ Next ExCom meeting – January 6, 4-6 pm, Zoom.
- ◆ *Meeting adjourned at 5:18 pm without objection.*

(End)



Eastern Analytical, Inc.

professional laboratory & drilling services



GROUNDWATER
SOIL & SLUDGE
WASTEWATER
STORMWATER
DRINKING WATER
SURFACE WATER

we're with you every step of the way | www.eailabs.com | 800.287.0525

SOME AIPG THINGS YOU CAN DO

What's going on out there? Let your colleagues know what you are working on, your new position, or a new company.

Simply e-mail a paragraph or more to:
kburger@rouxinc.com

Become active in your section.
Attend one of our meetings.

For details, simply e-mail info@ne-aipg.org

Join our Executive Committee. We always have openings for creative, committed Geologists wanting to make a difference, and not much is asked of your time.

Think about putting it on your resume!

For more info, simply e-mail info@ne-aipg.org



GeoVISION™ BOREHOLE VIDEO CAMERA SYSTEMS

**Hand Reel to 1000 Feet, Electric Winch to 2000 Feet
Joystick-Controlled Pan Tilt or Dual View Cameras**



Bore Diameters From 1-Inch To Mine Shafts

sales@alleghenyinstruments.com
www.alleghenyinstruments.com

800-255-1353
802-626-5302



Serving Southern New England and Eastern New York

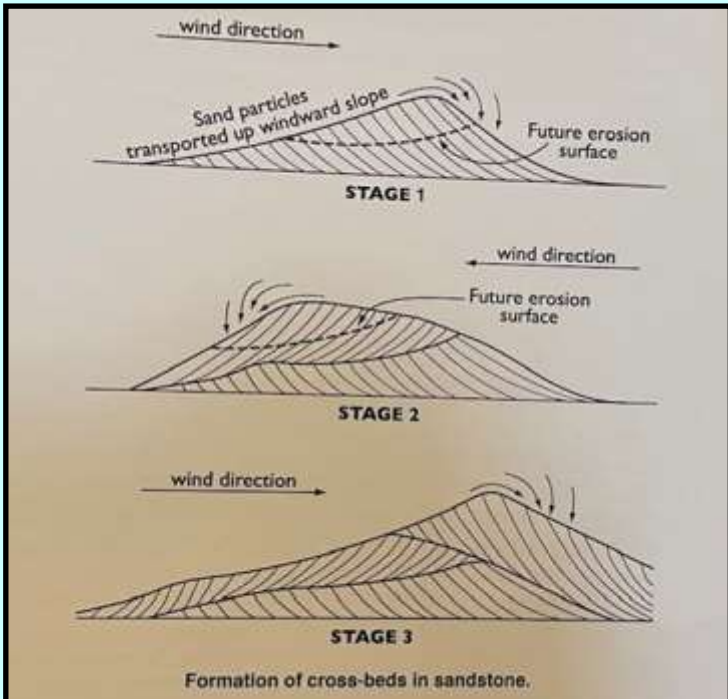
Connecticut Test Borings, LLC

Geotechnical and Environmental Drilling

- ◆ **Hollow Stem Auger Drilling**
- ◆ **Soil Sampling - Rock Coring**
- ◆ **Monitor Well Installations**
- ◆ **Direct Push (Geoprobe®) Sampling**



www.connecticuttestborings.com • 203-888-3857 • fax 203-888-0655 • ctblc@sbcglobal.net



Cross-bedding formational process (Multiple authors, 2008; see References)

Another prominent feature within the Aztec Sandstone is the color variation which occurs independent of layering. With the origin not completely understood, it is thought that the red discoloration is the result of oxidation associated with prolonged exposure to oxygen and groundwater following diagenesis. Lighter color areas would have escaped oxidation, which suggests that groundwater movement throughout the subsurface was irregular.

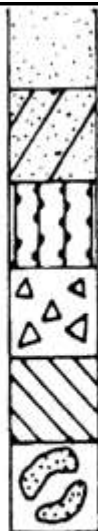


Cross-bedding in the Aztec Sandstone (author for scale)

CARL VERNICK, P.E.
President

SOIL MECHANICS DRILLING CORP.

3770 MERRICK ROAD • SEAFORD, L.I., NEW YORK 11783
(516) 221-2333



Test
Borings

3770 Merrick Road
Seaford, New York 11783
Phone (516) 221 - 7500
Fax (516) 221 - 0254

SOIL MECHANICS

Environmental Site Assessments
Geoprobe Environmental Sampling
Inspection-Testing-Drilling

Carl Vernick P.E.
President



MB DRILLING



MB Drilling has a large, multi-disciplined drilling fleet that provides a variety of drilling techniques to serve our clients.

Art Becker
ABecker@MBDrillingLLC.com

Brian McGuire
BMcGuire@MBDrillingLLC.com



609.294.1110
MBDrillingLLC.com

Fast & Accurate Surface and Borehole Geophysics

Acoustic & Optical Televiewer Logging

Borehole Video & Geophysical Logging

Multi-Electrode Resistivity Imaging

Seismic Refraction & Reflection

Radar, Magnetics, EM & VLF

Do
More
than
Scratch
the
Surface...

GEOPHYSICAL APPLICATIONS

INCORPORATED

Holliston, MA • 508-429-2430

Ask about our geophysical instrument rentals

(Geology Days continued from page 19)



Field Trip 1: Tuesday, November 12th – “Stratigraphy, Structure, and the Mineral Waters of Saratoga Springs”



(Geology Days continued on page 61)

(Geology Days continued from page 60)



Field Trip 2: Wednesday, November 13th – “The Albany Pine Bush: Globally-rare ecology built on a unique foundation of paraglacial sand dunes”



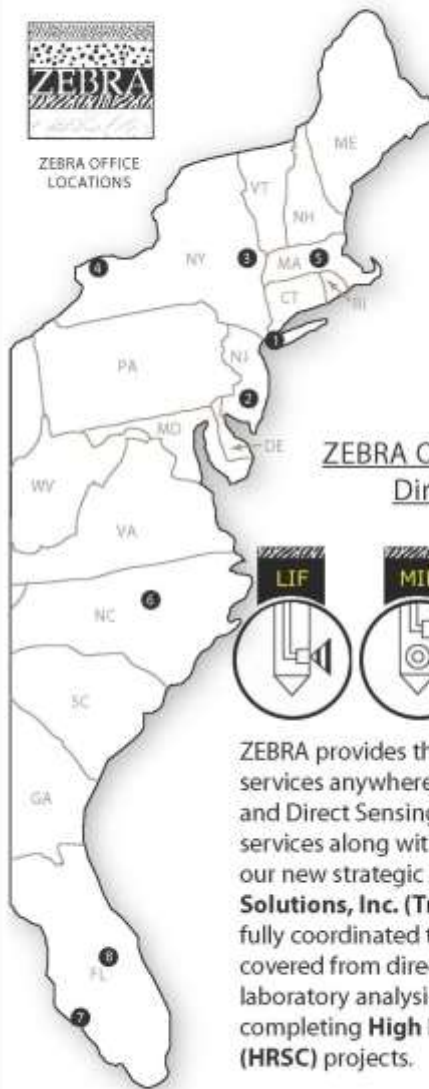
(End)

ZEBRA Environmental Corp.

Providing Subsurface Sampling, Injection and Data Collection
for Environmental Professionals Since 1992



ZEBRA OFFICE
LOCATIONS



Headquarters:
NYC, NJ &
Southern
CT Area

1 LYNBROOK, NY
516-596-6300

2 JACKSON, NJ
732-275-8333

Upstate NY &
New England

3 ALBANY, NY
518-355-2201

4 NIAGARA FALLS, NY
716-297-6567

5 UXBRIDGE, MA
508-581-9880

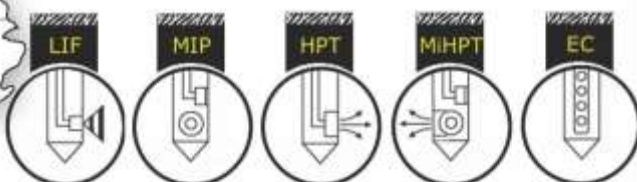
Southeast
Region

6 CARY, NC
813-626-1717

7 TAMPA, FL
813-626-1737

8 Orlando, FL
813-626-1717

ZEBRA Offers The Widest Range of Direct Sensing Services:



ZEBRA provides the widest range of Geoprobe/ DPT services anywhere, including a toolbox full of Injection and Direct Sensing systems. ZEBRA is now offering **UVOST** services along with **EC, MIP, MiHPT, CPT, MIP/CPT**. With our new strategic partnership with **TRIAD Environmental Solutions, Inc. (TriadES)** we are able to offer our clients a fully coordinated team of professionals. We have you covered from direct sensing to quantitative on-site laboratory analysis with DPT operators experienced in completing **High Resolution Sites Characterization (HRSC)** projects.

1-800-PROBE-IT

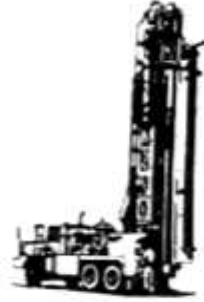
WWW.TEAMZEBRA.COM

BOYD ARTESIAN WELL CO., INC.

We design, manufacture and install round holes!

GEOHERMAL WELLS
WELL ABANDONMENT
ROTARY & PERCUSSION DRILLING
WELLS REPAIRED & DEEPEMED
COMPLETE WATER SYSTEMS
HYDROGEOLOGICAL CONSULTING
MONITORING WELLS

SPLIT SPOON SAMPLING
EXPLORATORY DRILLING
HYDROFRACTURING
IRRIGATION WELLS
SPECIALTY DRILLING
GRAVEL WELLS
SITE ASSESSMENTS



CARMEL, NY

(800) 321-2693

WWW.BOYDARTESIANWELLCO.COM

**Your FULL COLOR
advertisement could be
right here!**

**Contact Advertising
Manager Richard Young
at ryoungnj@aol.com**

Site & Subsurface
Investigations

Geotechnical &
Environmental
Site Investigations

SOIL TESTING, INC.

- Test Boring - Core Drilling
- Monitoring Wells
- Micro Piles
- Helical Piers

53 Years of Drilling Services

140 Oxford Road, Oxford, CT 06478

1-800-388-4473

(203) 888-4531

fax (203) 888-6247



AARCO Environmental Services Corp.

Premier Drilling Company



AARCO Environmental Services Corp. is a premier full service environmental contracting company. Our expertise includes a wide variety of drilling services:

*Environmental Drilling, Geotechnical Drilling
Hollow Stem Auger, SONIC Drilling, Air
Rotary Drilling, Mud Rotary Drilling, Well
Installation, Well Decommissioning, Chemical
Injection, Direct Push, Remote Access,
Truck and Track mounted rigs.*

NY & NJ Licensed



AARCO Environmental Services Corp.

50 Gear Avenue, Lindenhurst, NY 11757

Ph: (631) 586-5900 Fx: (631) 586-5910

www.aarcoenvironmental.com

NEW ENGLAND BORING CONTRACTORS OF CT., INC.

129 KREIGER LANE, GLASTONBURY, CT 06033

THE RIGHT EXPERIENCE, THE RIGHT EQUIPMENT, THE RIGHT COMPANY

Serving New England, NY & NJ

- Test Borings
- Monitor Wells
- Construction Drilling
- Multi-Rig Capabilities



www.newenglandboring.com

(800) 410-5550 • (860) 633-4649 • FAX: (860) 657-8046

What is AIPG's Mission?

The mission of the Institute shall include:

- ◆ Advancing the geological sciences and the profession of geology;
- ◆ Establishing qualifications for professional geologists;
- ◆ Certifying the qualifications of specific individual member geologists to the public;
- ◆ Promoting high standards of ethical conduct among its members and adjuncts and within the profession of geology; and
- ◆ Representing and advocating for, the geological profession before the government and the general public.

Want to reach more than 800 clients?
Then ADVERTISE!

Contact Dick Young 973-335-2289 or email RYoungNJ@aol.com to get your company's advertisement in the newsletter.

We offer all size ads from full page to business card size and full color to black-and-white.

For more info, go to: <https://ne-aipg.org/>

ADVERTISING How to get your ADVERTISING in NE AIPG's
Five Annual Publications.



"We look into the earth"

PENNSYLVANIA DRILLING CO.

FOUNDATION TESTING	INCORPORATED 1900
MONITORING WELLS	
DAM DRILLING	281 ROUTE 30
ENVIRONMENTAL WORK	IMPERIAL, PA 15126
"PENNDRILL" DRILLING SUPPLIES	PHONE 724-695-2400
MONITORING WELL SUPPLIES &	FAX 724-695-2455
MANUFACTURING	800-245-4420

www.pennsylvaniadrillingco.com

SB CHURCH

WELL & PUMP SERVICES SINCE 1886

49 Great Hill Road, Oxford, CT 06478

203.888.2132

www.sbchurchco.com

GET TO THE SOURCE... THE FIRST TIME!



with Horizontal Remediation Wells

Some of the benefits:

- No business interruption during installation
- Maximum exposure to contaminants
- Cost efficient
- Reduced maintenance equipment, and operations cost.

And a few of the applications are:

- Horizontal Air Sparging
- Horizontal Soil Vapor Extraction
- Horizontal Bio Remediation
- Horizontal Soil Sampling
- Chemical Oxidation
- And many more...

DIRECTIONAL
Technologies, Inc
Horizontal Directional Drilling Services

203.294.9200

www.directionaltech.com | Email: ksequino@directionaltech.com

PIGGYBACKING: SERVICE EXPANDED FOR NE/AIPG ADVERTISERS!

The NE/AIPG Newsletter has again expanded its Piggybacking options offered to Advertisers. Advertisers can include promotional flyers or brochures along with NE/AIPG's normal distribution of the Newsletter.

Piggybacking gives NE/AIPG Advertisers a cost-effective way to get their promotional material into the hands of NE/AIPG's targeted audience of decision-makers. That audience encompasses over 600, including ~500 NE/AIPG Members and Applicants throughout New York, New Jersey, and the six New England states, as well as ~40± AIPG National and Section Officers, plus over 60 Advertisers, and others. NE/AIPG Members benefit from keeping current on available and innovative products and services.

Piggyback Rates for digital issues (see <http://issuu.com/neaipg/docs>):

1. A "Full Page" (~8" high by 5" wide) Space in Full Color costs \$125 per issue.
2. A "Double Full Page" (~8" high by 10" wide) Space in Full Color costs \$225 per issue.
3. A "Quad Full Page" (2 Doubles of ~8" high by 10" wide each) Space in Full Color costs \$425 per issue.

To schedule your Piggyback promotion, or to learn more, just call Dick Young at 973-335-2289 or e-mail RYoungNJ@aol.com.



Maine Test Borings

18 Mack Lane
Hermon, ME 04401

Jon Rudnicki

Ph: (207) 848-7041
Ph: (800) 698-9142
Cell: (207) 659-1749

Fx: (207) 848-7042
www.mainetest.com
jon@mainetest.com

(Joshua Tree continued from page 57)



To the left and immediately below to the right:

Color variation within the Aztec Sandstone that defy layering.

Located to the immediate west of all this gorgeous red and tan, the Wilson Cliffs thrust is one of the oldest of the west-dipping, low-angle faults making up the Keystone thrust system; one of a series of thrust faults believed to have moved blocks of rock, several miles thick, tens of miles eastward during the middle of the Cretaceous period (exactly when is apparently still up for debate). As I hiked, scrambled, and bouldered, these gray dolomite and limestone rocks acted as an ever-present sentry to my ultimate destination on this tour: California (even though, as pictured above, I drove south – but we all know California is in both directions).



**Wilson Cliffs Thrust/
Bonanza King
Formation Rocks in
the distance.**



To Be Continued...

(End)



GEOD CORPORATION

AERIAL PHOTOGRAMMETRY • LAND SURVEYING • SUE

GEOD OFFERS YOU:



Photogrammetric Mapping • GIS Base Mapping



Subsurface Utility Mapping



Land & Engineering Surveying



Construction Surveys



Laser Scanning

24 Kanouse Road, Newfoundland, NJ 07435
Telephone: 973-697-2122 ■ Fax: 973-838-6433
Email: marketing@geodcorp.com
Website: www.geodcorp.com



***Specializing Exclusively in
Land, Marine, and Borehole Geophysics***

TECHNIQUES

Ground Penetrating Radar
Seismic Refraction/Reflection
Magnetics
Microgravity
Electromagnetics
Resistivity
Electrical Imaging
Spontaneous Potential
Multibeam Sonar

Metal Detection
Side Scan Sonar
Hydrography
Goelectric Leak Detection
Induced Polarization
Sub-Bottom Profiling
X-Ray Fluorescence
Acoustic Leak Detection
Borehole Logging and Imaging

APPLICATIONS

Rock Depth/Rippability Mapping
UST / Drum Detection
Utility Detection / Tracing
Well/Water Supply Siting
Fracture Detection
Sinkhole Mapping
Ordnance Detection
Rebar and Cable Mapping
Grave Detection
Contaminant Plume Mapping
Landfill Liner Leak Mapping
Boring Location Clearance
Subgrade Washout / Void Mapping
Seafloor Mapping

Shipwreck Location
Seismic Hazard Studies
Hydrocarbon Detection
Seismic Site Classification
Bathymetric Surveys
Well Characterization
Well Construction Confirmation
Bridge Pier Scour Detection
Archeogeophysical Surveys
Septic System Delineation
Blast and Vibration Monitoring
Detection of Foundation Elements
Water Table Mapping
Buried Landfill Detection

7 REASONS TO USE ENVIROSCAN

- Geophysics is our only product - so we really know what we're doing.
- We own all the gear for all techniques - so we use the right tools every time.
- Since we do only geophysics, we are not your competitor!
- We have 4 licensed PGs on-staff managing or reviewing every project.
- We provide fully electronic / digital / GPS-based mapping and reporting.
- We provide one-stop shopping for land, marine, and borehole geophysics.
- We are WBE - certified.



717-396-8922
1051 Columbia Avenue • Lancaster, PA 17603
www.enviroscan.com



A Division of ENVIROSCAN, INC.

A Division of ENVIROSCAN, INC.

NE-AIPG 2025 PUBLICATION SCHEDULE

Winter Newsletter

January	6	Deadline (Material to Editor)
January	17	Content to Publisher
February	3	E-mail to Members

Directory of Members

February	3	Deadline (Material to Editor)
March	10	Content to Publisher
April	7	E-mail to Members

Spring Newsletter

March	14	Deadline (Material to Editor)
March	31	Content to Publisher
April	14	E-mail to Members

Autumn Newsletter

July	18	Deadline (Material to Editor)
August	8	Content to Publisher
September	2	E-mail to Members

Holiday Newsletter

October	3	Deadline (Material to Editor)
October	17	Content to Publisher
November	3	E-mail to Members

**Please Email News, Info, & Articles
to Kim Burger: kburger@rouxinc.com**

**For Advertising Rates & Info, Please Contact
Dick Young: RYoungNJ@aol.com or
*Cell 203.627.8085***



50 Gear Ave
Lindenhurst, NY 11757



Phone: (631) 979-2890
Fax: (631) 979-2891
Email: locator@optonline.net
Web: www.x-raylocating.com

We offer:

- Line Locating
- Ground Penetrating Radar (GPR)
- Video Pipe Inspection (*DVD supplied*)
- Digital Mapping/Reports
- Fault Locating

Short notice? No problem.
Call us and we'll work with you.

We work on commercial, residential, industrial and government properties

We find buried:

- Electric and Communication cables
- Water and Gas lines
- Sewer and Drainage pipes
- Metallic/Non-metallic pipes
- Tanks
- Cesspools/Drywells
- Manhole Covers
- Valves
- Pull-Boxes/Splice Boxes

Our employees are professional, courteous and accommodating

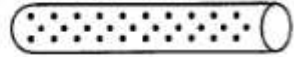
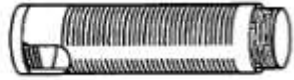
Visit our website
www.x-raylocating.com
and fill out our
Mark-out Request Form





**Atlantic
Screen &
Mfg., Inc.**

- Sand
- Manholes
- Bentonite
- Filter Sock
- Sampling Bailers
- Clear PVC Pipe
- Locking Caps



**Manufacturers of Slotted & Perforated Pipe
ranging from 1/2" to 24" in diameter**

**302-684-3197
FAX 302-684-0643**

142 Broadkill Rd. • Milton, DE 19968
www.atlantic-screen.com
email: atlantic@ce.net



COMPLETE ENVIRONMENTAL TESTING, INC.

Contact Robert Blake
Technical Sales Representative

80 Lupes Drive
Stratford, CT 06615

Tel (203) 377-9984
Fax (203) 377-9952
E-mail: rblake@cetlabs.com
www.cetlabs.com

- Since 1886 -

SAMUEL STOTHOFF CO., INC.

Flemington, NJ

WATER AND MONITORING WELL DRILLING
ROTARY -AUGER-CORE-PROBE RIG
DOWN HOLE VIDEO INSPECTION SERVICES
HYDROFRACTURING & WELL REDEVELOPMENT
7 PUMP SERVICE TRUCKS AND INVENTORY OF 400 PUMPS

Dick Stothoff
FAX: 908-782-9528

David Lyman
Phone: 908-782-2116



HOW DO YOU ACCESS DIFFUSION LIMITED PORE-SPACE?

With **COMPLETE CONTROL** of injection **DIRECTION**, **RADIUS**, and **VELOCITY**.

From the grounds of Space Launch Complex 15 at Cape Canaveral, **BADGER INJECTION SOLUTIONS, LLC** is now servicing the Northeast with kinetically adjustable pore space dilation injection techniques to emplace your selected in-situ treatment amendment.

It's all about **CONTACT**, and the Badger Technology **DELIVERS**.

- DAILY injection volumes average 2,500 GALLONS with injection rates of up to 35 GALLONS PER MINUTE
- TARGET SPECIFIC TREATMENT AREAS using a selection of nozzle arrays (360°, 270° or 180°) with a MINIMUM RADIUS OF 15-FEET
- VARIABLE INJECTION FLOW RATES - essential in allowing amendments to diffuse into limited pore spaces



Environmental Assessment & Remediations is the certified BADGER technology provider for the Northeast.

Contact us **NOW** to coordinate your **INJECTION SERVICES** for 2016!

(631) 447-6400 ext 153
allen@enviro-asmnt.com
badgerinjectionsolutions.com



ENVIRONMENTAL
ASSESSMENT &
REMIEDIATIONS



Providing Critical Environmental Data on Properties Throughout the U.S.

Envirosite's cost-effective government records database and historical property research solutions are used industry-wide for:

- Environmental Site Assessments (ESAs)
- Environmental Risk Management
- Phase 1 & 2 Reporting
- RSRA Desktop Reviews
- Due Diligence



Our solutions provide near real-time data delivery. Receive the environmental information you need – when you need it.

Contact us at 866-211-2028 and reference our NEAIPG newsletter ad for a FREE TRIAL REPORT.



"Quality and Service - the way it used to be."

- Subsurface Exploration
- Geotechnical Engineering
- Geotechnical Laboratory Testing
- Special Inspections
- Construction Materials Testing
- Environmental Services
- SWPPP Monitoring
- Storm Water Infiltration Testing
- Asbestos Abatement Monitoring



1.800.821.5911 • info@sjbegs.com • www.sjbegs.com

Offices in: Albany, Buffalo, Cortland, Jamestown and Rochester, NY

CRAFTSMANSHIP You Can Trust

Put our 65+ years of Experience to the test

Services Offered

- Environmental
- Construction
- Alternative Energy
- Maintenance



Visit us online @

www.islandpumpanktank.com

1-800-458-PUMP

Two Companies have Joined Forces!



ENVIRENT
corporation

Environmental
RENTAL

FREE DELIVERY
on rental
orders in
North Jersey

- PID'S
- Water meters
- Dust meters
- Bailers and
much more....

**Now bigger and better
with expanded capabilities
for all your equipment needs
while still providing the same
great personal service you expect.**

10% OFF
your first rental
with postcard

(800) 446-8736 and (800) 219-7368

www.environmentalrental.com

www.envirent.com

**ANGELO TAGLIACOZZO MEMORIAL
GEOLOGICAL SCHOLARSHIP TRUST FUND
LIST OF CONTRIBUTORS SINCE 1987**

(All Contributors, Since Fund Inception Through December 31, 2024)

FRIENDS OF THE FUND
(\$1,000+)

Aquifer Drill ing & Testing, Inc.
Banino, George
Bl auvelt, Robert P.
Dimmick, Charl es Wm.
Kasabach, Haig F.
Kraemer, Curtis A.
Leggette, Brashears &
Graham, Inc.
McGrath, Dennis G.
Northeast Section – AIPG
Patota, Jean M.
(From benefactor)
Proce, Christopher
Rexrode, H. Leonard, Jr.
Roux Associates
Roux, Paul H.
Schiffman, Arnol d
Sl ayback, Russel I G.
Val kenburg, Nichol as
Young, Richard H.

(From contributor)
Brinckerhoff, Laura
*(In Honor of
Frank McCarthy)*
Burke, Michael R.
Con-test Analytical
Laboratory
EcoRental
Gavras, John M.
Graff, Carol S.
Harrington, Jonathan
Long, Dean
Kl eiman, Amy
Mil l er, David W.
Neubeck, Wil l iam S and
Jean M.
Nova Consul ting &
Engineering, LLC
PVE Sheffl er
Rich, Charl es A.
Richter, Dorothy
Rosenfel d, Mordecai
Soil Testing, Inc.

BENEFACTORS (\$500+)

Al l en, Boyd III
(From Patron)
Cascade Drill ing, Inc.
Emerson, Mark
FPM Remediations
Frederick, Jeffrey
Herrick, Dean H.
Higgins, Jonathan B.
(In Memory of Leo Hal l)
Kayl er, Kyl e
Mahier, Luke
(From Patron)
McEachern, Michael
Stone, Timothy S.
Whitbeck, Luanne

PATRONS (\$250+)

Airmag Surveys, Inc.
Al pha Analytical
Anonymous
Becker, Arthur E.

SPONSORS (\$125+)

Al pha Geoscience
Brown, Christopher
Chamberl ain, John Mark
Cl emens, Robert H.
DeAngel is, James
Eggers, J.
ERM – Northeast
Fakunding, Robert
Getchel l , frank
Graham, Jack B.
Greenman, Michael
Heindel , Craig and
Chaves, Judith
Hince, Eric
Koch, El l is
Mathez, Muriel
Pieriboni, John
Prehoda, Wil l iam P.
Schechner, Cl aire and Louis
Scheuing, Laurie

(Contributors continued on page 83)

(Contributors continued from page 83)

Standish, Richard
Stewart, Robert A.
Tsacoyannis, Nicholas
Urban-Mead, Russell B.
Waste Management, Inc.
(Matching Gift on Behalf of
George Banino)

CONTRIBUTORS (\$50+)

Arguden, A. Tefvik
Barish, James M.
Bell, David L.
Bell, Edward S.
Bennington, Bret
Bugh, James
Cain, Kevin
Davis, R. Laurence
Environmental Compliance,
Inc. (On Behalf of
Joseph Torlucci)
Flick, William
Gallagher, Evelyn A.
Hanlon, Kerry
Herman Karpel Memorial Fund
(On Behalf of Friends of
Rhoda Tagliacozzo)
Hnottavange-Tellen, Ken
Hoogerhyde, Kevin J.
Housman, John J., Jr.
Jonathan Paul Associates, Inc.
Kaczor, Sofia
Ketani, Ralph
Mase, David F.
Maslansky, Steven P.
McEachern, Jessica
Mozer, Robert
Neubeck, William S.
Penn, William E.
Rice, John
Rhyner, John
Russo, Luigi
Ryan, Michael J.
Scott, David
Shope, Steven
Siliman, Robert and Roberta
Sparrow, Leslie
St. Germain, Daniel J.
Stokes, Kurtis W.
StoneHill Environmental, Inc.

Tatlock, Derek
Timmons, Robert
Torlucci, Joseph
Tyers, George
Waring, Andrew D.
Wenz, Kenneth P.
Werle, Craig
West, William T.
Weyer, Kelly
Wohlford, Thomas

DONORS (Up To \$50)

Bablin, Christopher
Barbour, Richard and Rose
Becker, Jennifer
Bowes, James
Bradley, Margaret
Busa, Mark D.
Clausen, Jay
Cox, Peter
Faldetta, Sarah
Fournier, Leroy
Fredrick, William T
Gannett Fleming, Inc.
Hager, Jutta
Harwood, David G.
Hergert, David
Hixon, Richard A.
Hulseapple, Scott
King, Daniel
Kowalski, Richard G.
Ross, Lauren and Shelley
Sass, Daniel B.
(In Honor of K. E. Caster)
Shakti Consultants
Sinnott, Joseph
Skehan, James
Speidel, David
Susca, Michael
Vozza, Scott
Wayland, Russell I
Weinstock, Eric
Wehran Engineering

***Why Isn't Your Name
On This List?
Solve it!
Simply see [Pages 80-81](#)
and then
Move into Action!***

Celebrating 38 Years of Scholarships! **The Angelo Tagliacozzo Memorial Geological Scholarship**

The Angelo Tagliacozzo Memorial Geological Scholarship was established by the Northeast Section of the American Institute of Professional Geologists in late 1986. The first Scholarships were presented to undergraduate Geology students in 1987.

The ATMG Scholarship recognizes the dedicated leadership and service which Angelo provided to NEAIPG, to AIPG, and to the geological profession, until his untimely passing on October 11, 1986. The Scholarship furthers Angelo's goal of acquainting young geologists with AIPG and with AIPG's importance to the geological profession.

ANGELO TAGLIACOZZO (1936 - 1986)

Angelo Tagliacozzo received his doctorate in Geology from the University of Rome (Italy) in 1962. Thereafter, he worked in various positions as geologist, geophysicist, and hydrogeologist, which included assignments abroad, in the U.S., and with the United Nations. Angelo provided exemplary service to AIPG at the Section and National levels. He was a Northeast Section Executive Committee Member (1973- 1982), Vice President (1977-1978), President (1979-1980), National Advisory Board Delegate (1981-1982), and Screening Board Chairman (1984-1986). Angelo's dedication to and leadership of the Northeast Section Screening Board has become the ultimate standard against which service in such a position is measured. Angelo also served as an AIPG National Executive Committeeman (1982); he was a vigorous advocate of measures to increase professionalism. Angelo was (and will always be remembered as) a respected professional... and a friend to many.

THE SCHOLARSHIP

NEAIPG grants Scholarships to undergraduate geology students annually. The Scholarships are designed to help with the cost of summer field courses, textbooks, and other aspects of geological education. Scholarships are awarded, on academic achievement and on financial need, to students enrolled in recognized geology programs at colleges or universities located in Connecticut, Maine, Massachusetts, New Hampshire, New Jersey, New York, Rhode Island, Vermont.

YOUR CONTRIBUTIONS

Your participation is encouraged in support of this dynamic memorial to Angelo and his recognition of the importance of AIPG to the geological profession. Contributions to the Scholarship Perpetual Trust Fund should be written to:

The Angelo Tagliacozzo Memorial Geological Scholarship Trust Fund, Inc.
and mailed to:

NE/AIPG Geological Scholarship Trust Fund
c/o Scott Hulseapple
679 Plank Rd, Clifton Park, NY 12065

Alternatively, you can **make your Contribution RIGHT NOW ONLINE**, by simply going to <https://ne-aipg.org/> and clicking "Donation To Scholarship Fund" (under "Quick Links" on the home page).

All Contributions are invested perpetually, with earnings thereon used solely for the Scholarship. NE/AIPG bears all costs of administration. Please ask your employer about matching your tax-free contribution, and additional corporate contributions.

For further information, contact Kelly Weyer:

neaipg.atscholarship2@gmail.com

Memorandum

To: Kelly Weyer, Chairperson, ATMG Scholarship, Northeast Section, AIPG

From:

Date:

Re: *I'm Taking the Pledge: I'M IN FOR 2025!*

Dear Kelly,

This year, I am 100% with you when it comes to achieving the Section's goal of 100% participation in support of the ATMG Scholarship Perpetual Trust Fund in 2025!

I agree with your encouragement that **each and every Section Member make a contribution in accordance with their ability!** Affordable donations from many members, can show a stronger and more united support for the future of our profession and aspiring geologist, rather than relying on the generous support from a few members.

To show my support toward the profession of Geology and encourage aspiring Geologist, you can count me in FOR 2025!

I am committed to contributing, as much as I can, **to give back to the profession that has given me so much. I'M IN FOR 2025**, and I am considering a **tax-free donation** equivalent to \$35 a Week, \$35 a Month, or \$35 for the Year!

Also, I just wanted to tell you I am delighted to know that every one of those hard-earned dollars that I contribute will be INVESTED in the Scholarship Perpetual Trust Fund, so my contribution today can keep on giving, year after year! That makes me feel like my contribution really means something, both now and in the long term!

I have thought it over, and **I know how important 100% participation is to make significant impacts in the lives of aspiring geologists!** So, Kelly, I'M IN FOR 2025, as indicated below.

If I want to add another tax-free donation later in the year, or if I want to pay this donation online, I know that I can visit the Section website at <https://ne-aipg.org> and make a donation at any time.

Professionally yours, _____

At this point in 2025, I am pledging the amount indicated below, and I will provide payment via check, or will pay online at <https://ne-aipg.org/>. I indicated my donation amount and payment method below with an "x" on the appropriate statements:

____ \$35 a Week (\$1820 for 2025)

____ \$35 a Month (\$420 for 2025)

____ \$35 a Year (\$35 for 2025)

____ I pledge to donate the amount of \$_____ (I know that a little bit is better than nothing!)

____ I have physically mailed this letter to you and enclosed my check, made out to "The Angelo Tagliacozzo Memorial Geological Scholarship Trust Fund, Inc."

____ I have emailed you this letter, and I will pay the donation online. If my payment is not received within 30-days of receiving this letter, please invoice me and I will agree to pay as soon as possible, and no later than by 12/1/2025.

Signed: _____

Name Printed: _____

Address: _____

Email Address: _____

Mail this Pledge to: NE/AIPG Geological Scholarship Trust Fund,
c/o Scott Hulseapple 679 Plank Rd, Clifton Park, NY 12065

- or -

Email this Pledge to: NE/AIPG Geological Scholarship Trust Fund,
c/o Kelly Weyer, neaipg.atscholarship2@gmail.com